

**LEGEND:**  
LEVELS DATUM IS AHD.

SURROUNDING SITE LEVELS AND DETAILS BASED ON AT&L CIVIL WORKS MASTERPLAN PACKAGE PROVIDED DATED 27.05.24.

- OVERLAND FLOW DIRECTION
- 50.00 - ESTATE DESIGN CONTOUR (MAJOR) 2.5m INTERVALS
- 50.50 - ESTATE DESIGN CONTOUR (MINOR) 0.5m INTERVALS
- ESTATE INFRASTRUCTURE BASIN
- TREES PITS

**MUSIC MODEL CATCHMENT BREAKDOWN:**

| CATCHMENT | ROOF     | HARDSTAND | LANDSCAPE |
|-----------|----------|-----------|-----------|
| 1 (M03)   | 6.899 ha | 5.300 ha  | 2.900 ha  |
| 2 (M06)   | 2.200 ha | 3.717 ha  | 1.111 ha  |

**NOTE:**  
REFER TO AT&L ESTATE DRAWINGS FOR SEDIMENT BASIN, BIO RETENTION BASIN, WETLAND, STORAGE POUND AND TREE PITS DETAILS.

**STORMWATER DRAINAGE PLAN**  
(OPERATIONAL STORMWATER ARRANGEMENT)  
SCALE 1:1000

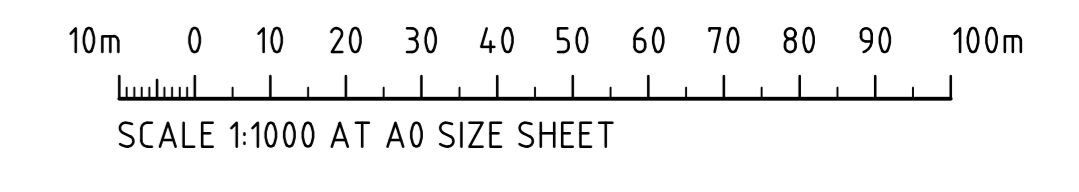
**Department of Planning, Housing and Infrastructure**

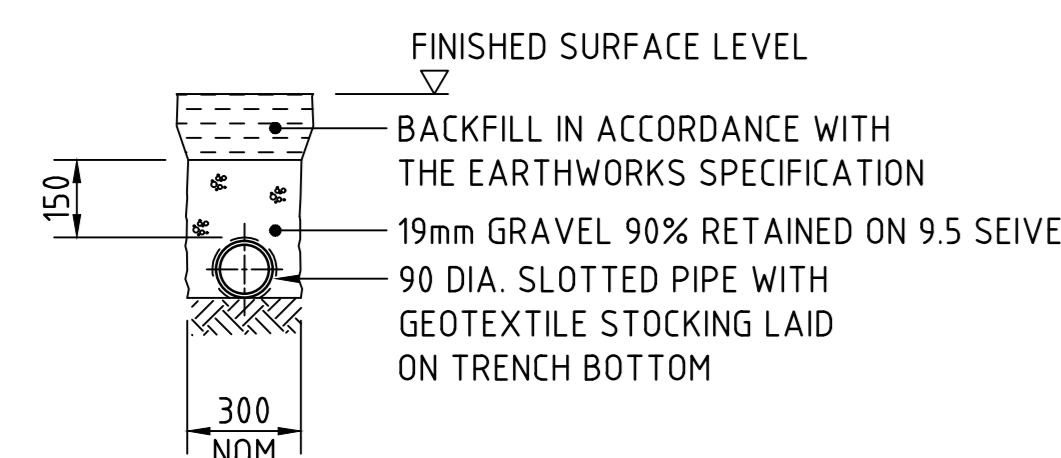
Issued under the Environmental Planning and Assessment Act 1979

Approved Application: SSD-76913969

Granted on: 26 February 2026

Signed: T.W. Sheet Number: 11 of 19

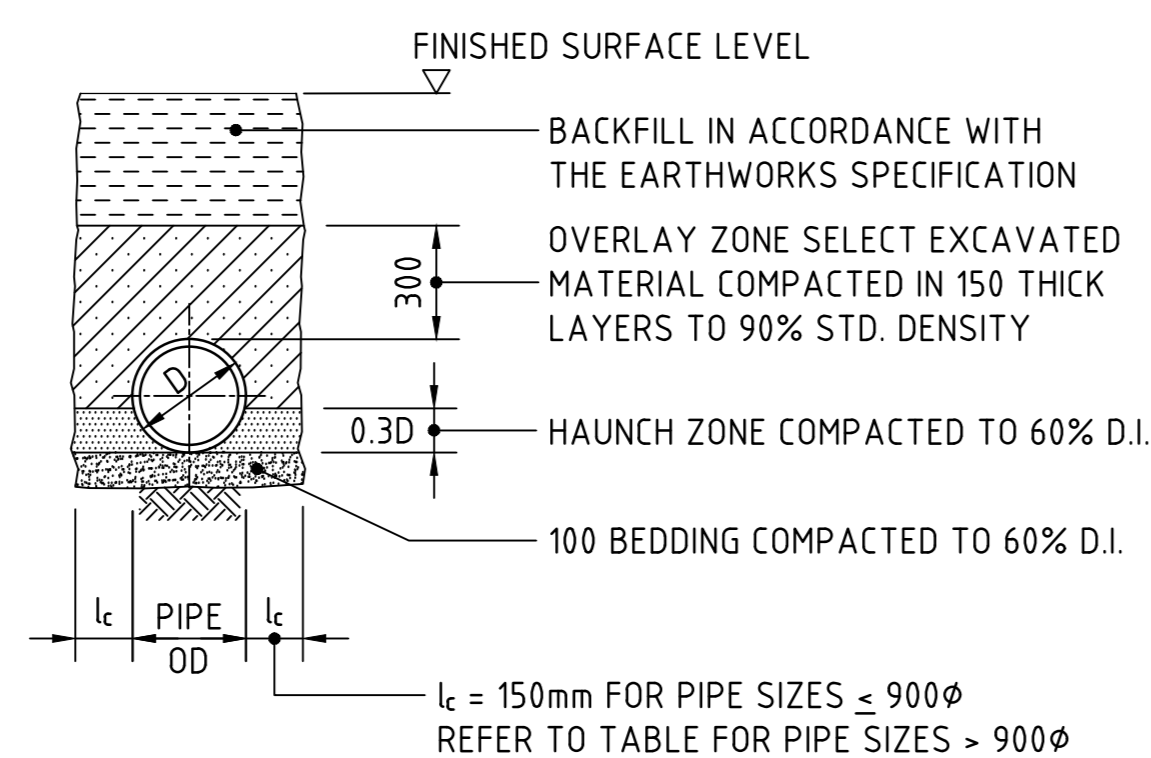




**SUPPORT TO AGRICULTURAL DRAIN**  
SCALE 1:20

| SIDE ZONE MATERIAL GRADING |                    |
|----------------------------|--------------------|
| SIEVE SIZE (mm)            | WEIGHT PASSING (%) |
| 75.0                       | 100                |
| 9.5                        | 100 TO 50          |
| 2.36                       | 100 TO 30          |
| 0.60                       | 50 TO 15           |
| 0.075                      | 25 TO 0            |

SELECT FILL MATERIAL IN ACCORDANCE WITH TABLE 1 AS 3725

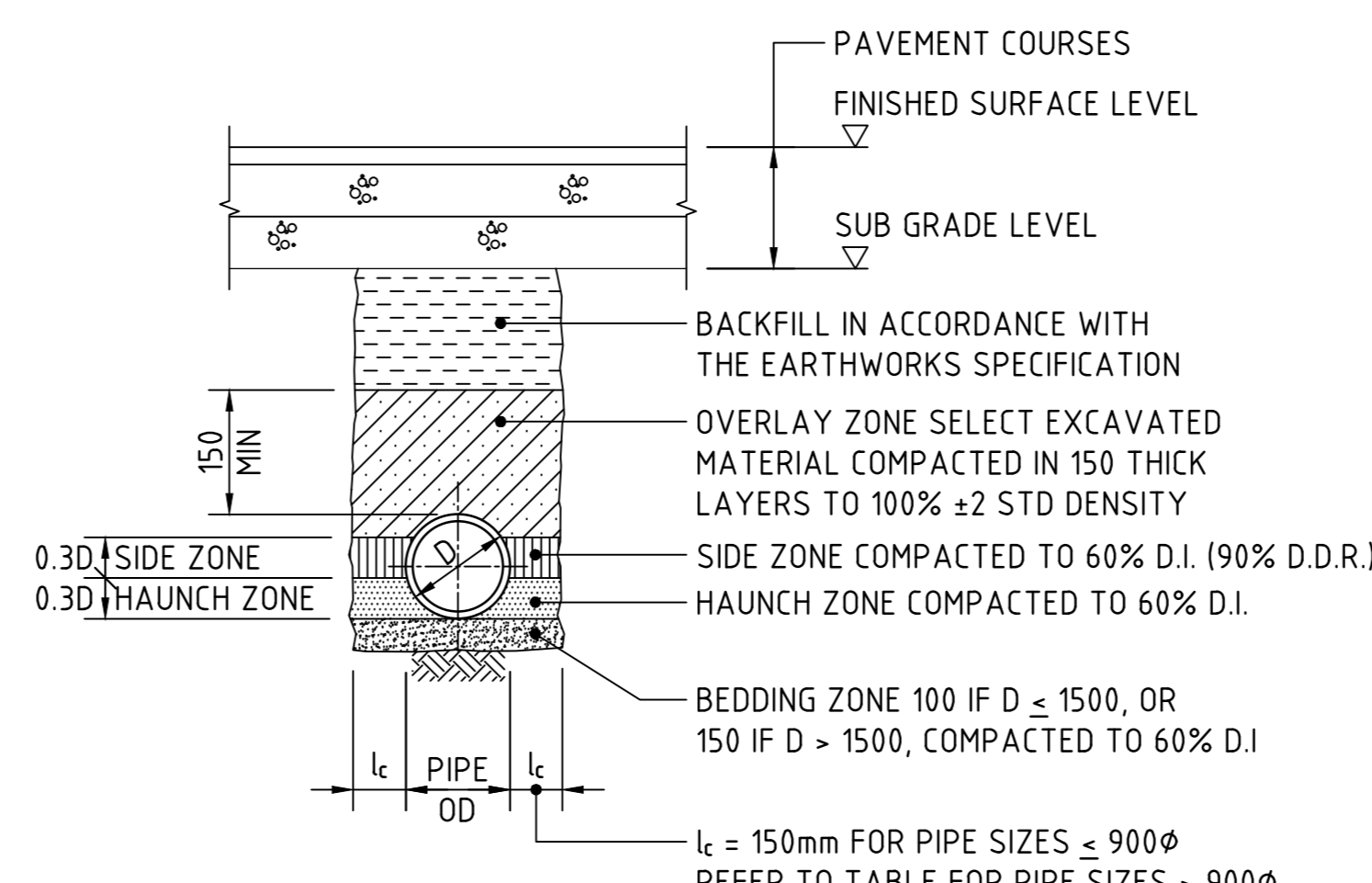


**TYPE H1 SUPPORT TO CONCRETE PIPES AT LANDSCAPED AREAS**  
SCALE 1:20

| BEDDING & HAUNCH MATERIAL GRADING |                    |
|-----------------------------------|--------------------|
| SIEVE SIZE (mm)                   | WEIGHT PASSING (%) |
| 19.0                              | 100                |
| 2.36                              | 100 TO 50          |
| 0.60                              | 90 TO 20           |
| 0.30                              | 60 TO 10           |
| 0.15                              | 25 TO 0            |
| 0.075                             | 10 TO 0            |

| SIDE ZONE WIDTH |         |
|-----------------|---------|
| PIPE SIZE (mm)  | lc (mm) |
| ≤ 900φ          | 150     |
| 1050φ           | 175     |
| 1200φ           | 200     |
| 1350φ           | 225     |
| 1500φ           | 250     |
| 1650φ           | 275     |
| 1800φ           | 300     |

ENGINEER TO SPECIFY TRENCH WIDTHS FOR PIPE SIZES GREATER THAN 1800φ

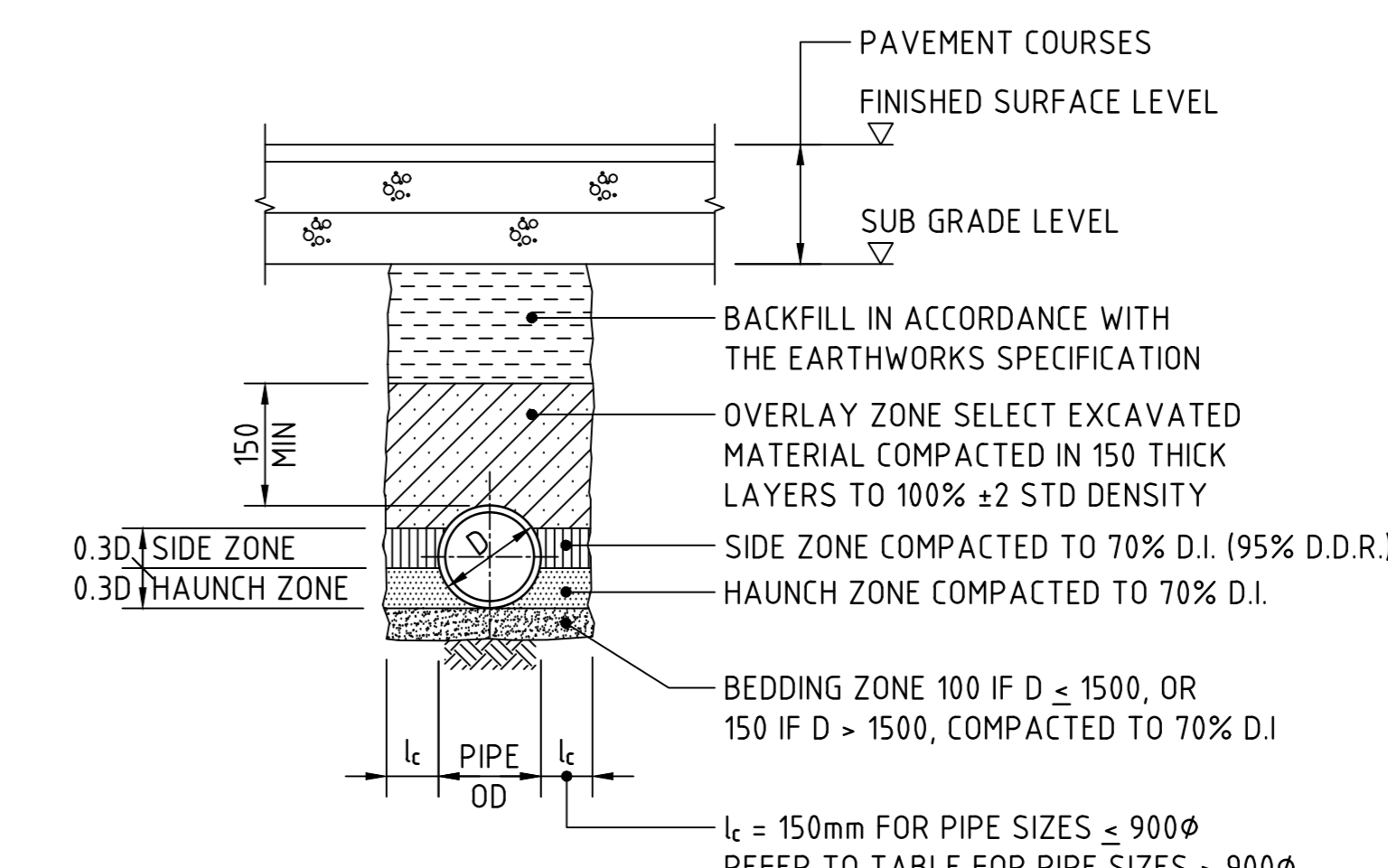


**TYPE HS2 SUPPORT TO CONCRETE PIPES UNDER PAVEMENT**  
SCALE 1:20  
D ≤ 1350, MAX FILL = 4.0m  
D > 1350, MAX FILL = 3.0m

| BEDDING & HAUNCH MATERIAL GRADING |                    |
|-----------------------------------|--------------------|
| SIEVE SIZE (mm)                   | WEIGHT PASSING (%) |
| 19.0                              | 100                |
| 2.36                              | 100 TO 50          |
| 0.60                              | 90 TO 20           |
| 0.30                              | 60 TO 10           |
| 0.15                              | 25 TO 0            |
| 0.075                             | 10 TO 0            |

| SIDE ZONE WIDTH |         |
|-----------------|---------|
| PIPE SIZE (mm)  | lc (mm) |
| ≤ 900φ          | 150     |
| 1050φ           | 175     |
| 1200φ           | 200     |
| 1350φ           | 225     |
| 1500φ           | 250     |
| 1650φ           | 275     |
| 1800φ           | 300     |

ENGINEER TO SPECIFY TRENCH WIDTHS FOR PIPE SIZES GREATER THAN 1800φ



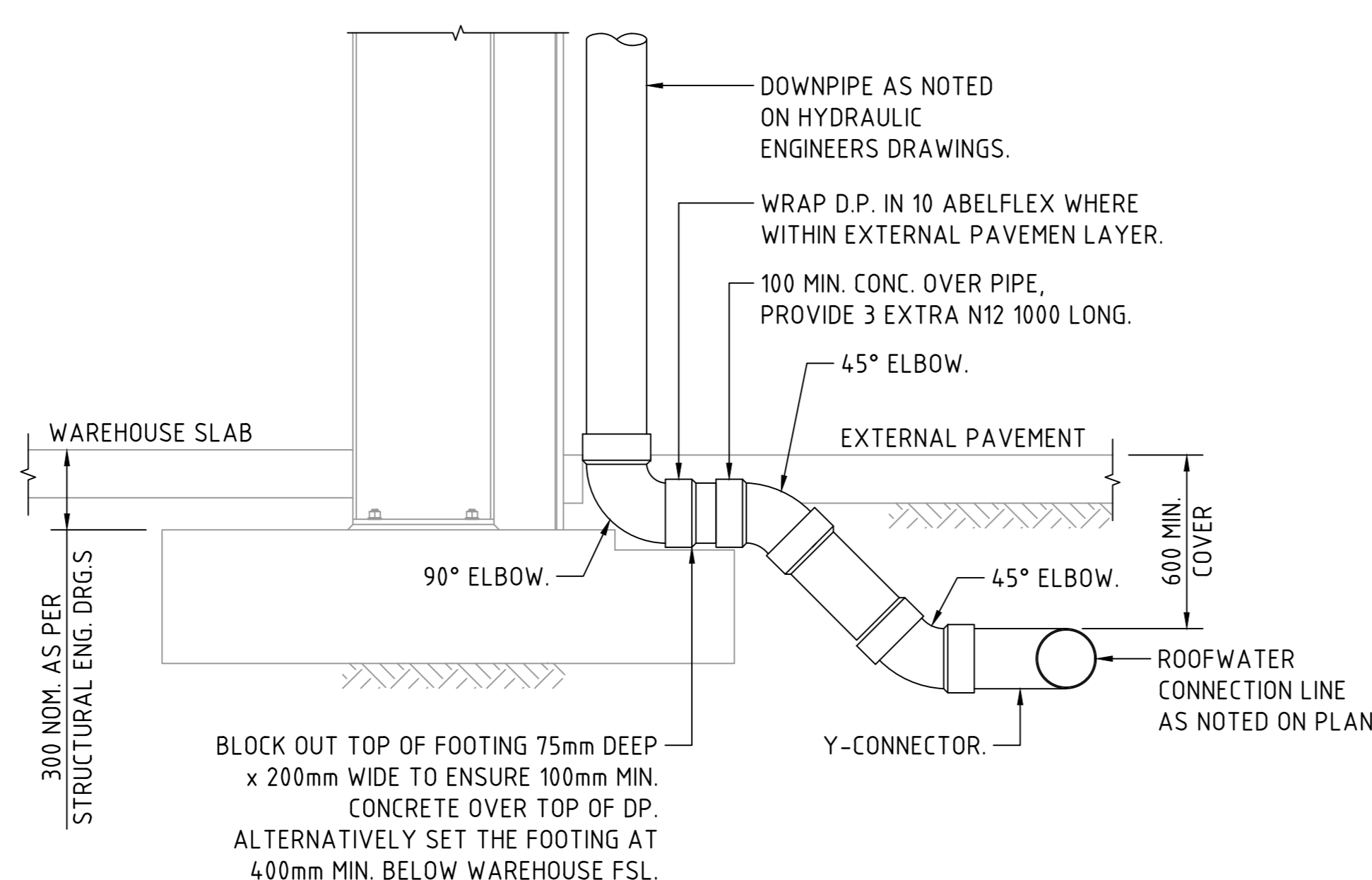
**TYPE HS3 SUPPORT TO CONCRETE PIPES UNDER PAVEMENT**  
SCALE 1:20  
D ≤ 1050, MAX FILL = 6.0m  
D > 1050, MAX FILL = 4.8m

| SIDE ZONE MATERIAL GRADING |                    |
|----------------------------|--------------------|
| SIEVE SIZE (mm)            | WEIGHT PASSING (%) |
| 75.0                       | 100                |
| 9.5                        | 100 TO 50          |
| 2.36                       | 100 TO 30          |
| 0.60                       | 50 TO 15           |
| 0.075                      | 25 TO 0            |

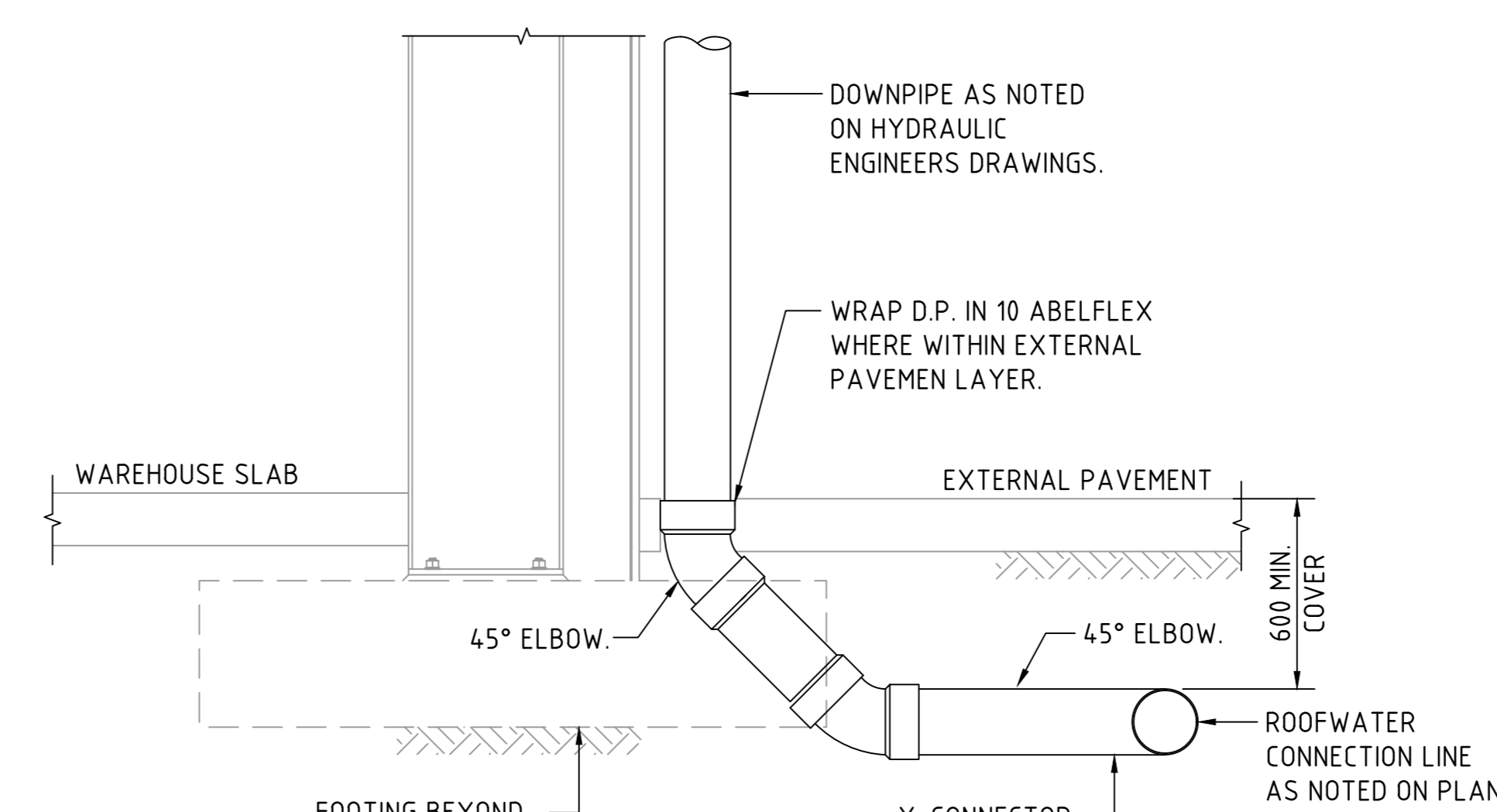
SELECT FILL MATERIAL IN ACCORDANCE WITH TABLE 1 AS 3725



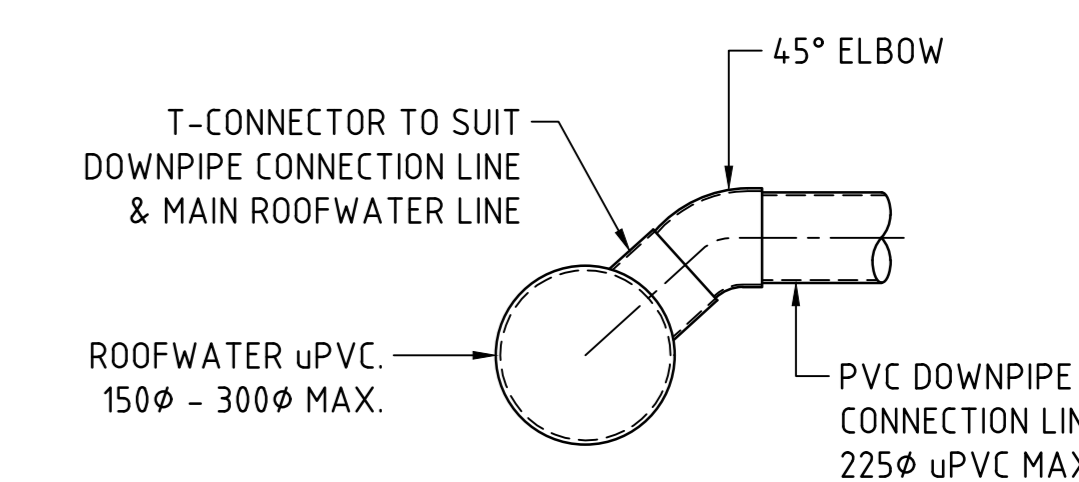
**SUPPORT TO uPVC PIPES**  
SCALE 1:20



**DOWNPIPE TURN-UP DETAIL A**  
(AT FOOTING LOCATION)  
SCALE 1:20



**DOWNPIPE TURN-UP DETAIL B**  
(CLEAR OF FOOTING)  
SCALE 1:20



**DOWN PIPE CONNECTION TO uPVC PIPE**  
SCALE 1:20

1. PROPRIETARY T-PIECE CONNECTORS SHALL BE USED TO WHERE DIRECT CONNECTIONS ARE REQUIRED TO uPVC PIPES.
2. ALL JOINTS TO BE SEALED WITH SOLVENT WELDED JOINTS.
3. THE PVC PIPE SHALL NOT PROTRUDE BEYOND THE INNER SURFACE OF THE STORMWATER PIPE.

200mm 0 500 1000 1500 2000mm  
SCALE 1:20 AT A0 SIZE SHEET

DRAWING No. SDY-CRC-DRW-CV-450



**Department of Planning,  
Housing and Infrastructure**

Issued under the Environmental Planning and Assessment Act 1979

Approved Application: SSD-76913969

Granted on: 26 February 2026

Signed: T.W. Sheet Number: 12 of 19

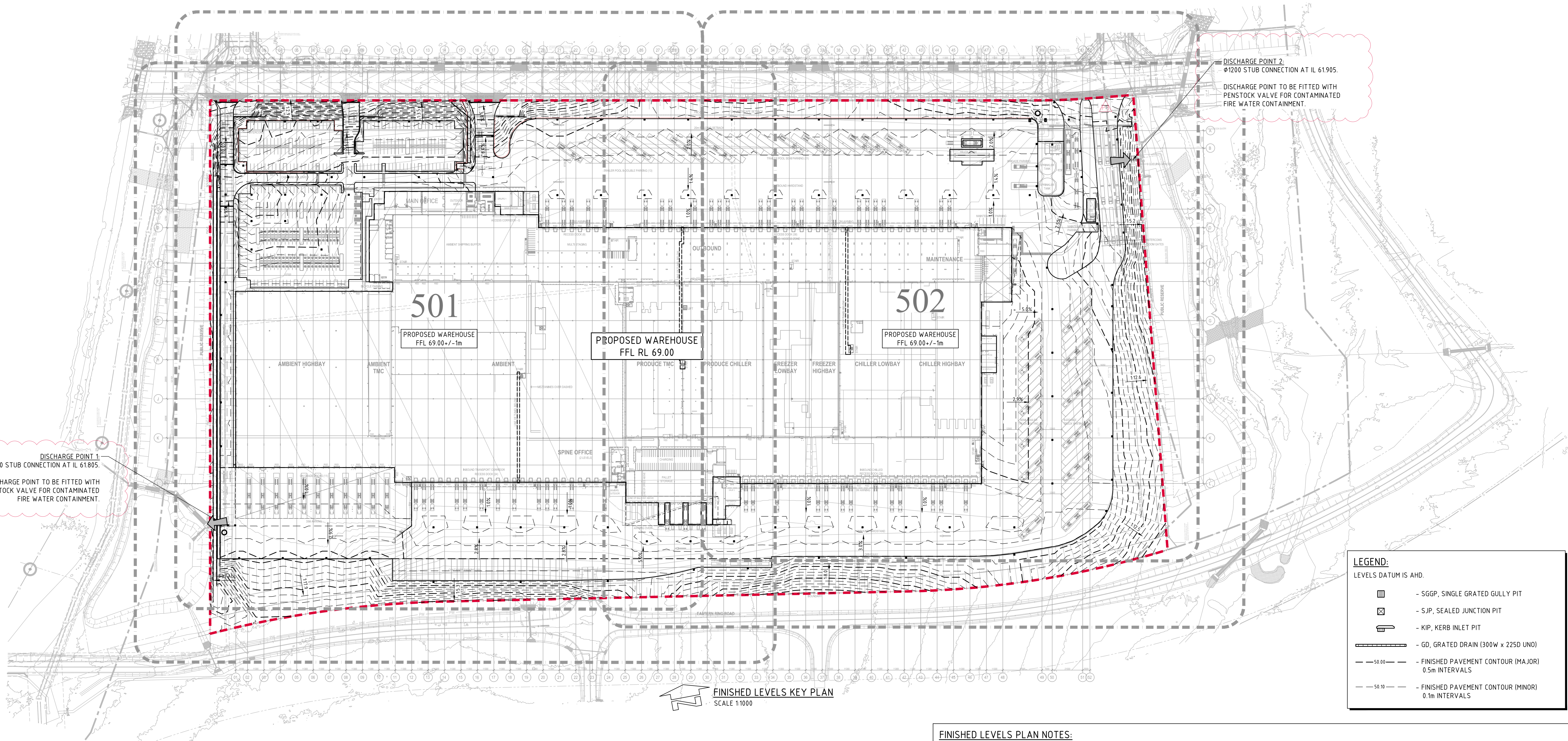
**FOR APPROVAL**

| AMENDMENTS               | DATE     | ISSUE  | AMENDMENTS | DATE  | ISSUE    | CLIENT             | PM                | ARCHITECT      | BUILDER | PROJECT  | CONSULT               | DRAWING TITLE                         |
|--------------------------|----------|--------|------------|-------|----------|--------------------|-------------------|----------------|---------|--|-----------------------|---------------------------------------|
| ISSUED FOR SSDA APPROVAL | 30.09.25 | P3     |            |       |          | ALDI               | RP INFRASTRUCTURE | SBA ARCHITECTS |         | ALDI SYDNEY DISTRIBUTION CENTRE<br>STATE SIGNIFICANT DEVELOPMENT APPLICATION<br>EASTERN RING ROAD, BADGERY'S CREEK | COSTIN ROE CONSULTING | STORMWATER DRAINAGE DETAILS - SHEET 1 |
| ISSUED FOR SSDA APPROVAL | 13.12.24 | P2     |            |       |          |                    |                   |                |         |  |                       |                                       |
| ISSUED FOR INFORMATION   | 28.11.24 | P1     |            |       |          |                    |                   |                |         |  |                       |                                       |
| DESIGNED                 | DRAWN    | DATE   | CHECKED    | SCALE | SCALE    | SCALE              | SCALE             | SCALE          | SCALE   | SCALE  | SCALE                 | SCALE                                 |
| XC                       | JB       | AUG 24 | -          | A0    | AS SHOWN | C015146.01-SSDA150 |                   |                |         |  |                       |                                       |

DRAWING TITLE  
STORMWATER DRAINAGE DETAILS - SHEET 1  
COSTIN ROE CONSULTING No. C015146.01-SSDA 450 ISSUE P3







**FINISHED LEVELS KEY PLAN**  
SCALE 1:1000

**LEGEND:**

LEVELS DATUM IS AHD.

|  |  |
|--|--|
|  | - SGGP, SINGLE GRATED GULLY PIT                            |
|  | - SJP, SEALED JUNCTION PIT                                 |
|  | - KIP, KERB INLET PIT                                      |
|  | - GD, GRATED DRAIN (300W x 225D UNO)                       |
|  | - 50.00 - FINISHED PAVEMENT CONTOUR (MAJOR) 0.5m INTERVALS |
|  | - 50.10 - FINISHED PAVEMENT CONTOUR (MINOR) 0.1m INTERVALS |

- FINISHED LEVELS PLAN NOTES:**
- LEVELS DATUM IS AUSTRALIAN HEIGHT DATUM (A.H.D.).
  - GRADING REQUIREMENTS TO BE COMPLETED IN ACCORDANCE WITH AUSTRALIAN STANDARD AS2890.1, AS2890.2 AND AS2890.6.
  - ALL CONTOUR LINES & SPOT LEVELS INDICATE FINISHED PAVEMENT LEVELS U.N.O. ON PLAN.
  - CONTOUR INTERVALS
    - THE MINOR CONTOUR INTERVAL IS 0.1m.
    - THE MAJOR CONTOUR INTERVAL IS 0.5m.
  - HARDSTAND GRADING
    - MINIMUM PAVEMENT GRADE IS TO BE 1:100 (1%).
    - GRADING OF ON-GRADE DOCKS TO BE 1:100 (1%) FALL AWAY FROM THE DOCK FACE FOR A LENGTH OF 15m U.N.O.
    - GRADING OF TRUCK CIRCULATION ZONES TO BE MINIMUM AS NOTED ABOVE, 3-4% NOMINAL AND MAX. 5%.
  - CARPARKING AREA GRADES
    - MINIMUM PAVEMENT GRADE IS TO BE 1:100 (1%), DESIRABLE MINIMUM GRADE 1:50 (2%).
    - MAXIMUM PAVEMENT GRADE IS TO BE 1:20 (5%) IN CARPARKING AREAS AND 1:25 (4%) ELSEWHERE.
    - DISABLED ACCESS PARKING ZONES AND SHARED SPACE TO BE MAXIMUM OF 1:33 (3%) IN ASPHALT PAVEMENT AND MAXIMUM OF 1:40 (2.5%) IN CONCRETE PAVEMENT.
    - CARPARK RAMP GRADES TO BE MAX 1:5 WITH 2.5m SMOOTH TRANSITION AT TOP AND BOTTOM U.N.O.
  - TRUCK RAMP GRADES
    - MAXIMUM B-DOUBLE OR 19.0m AV RAMP GRADES ARE TO BE 1:8 (12%) U.N.O. ON PLAN
  - WHERE FIRE BRIGADE ACCESS IS REQUIRED, MAXIMUM RAMP GRADIENTS ARE TO BE 1:6 (16.6%), DESIRABLE RAMP GRADIENTS ARE TO BE 1:8 (12.5%) WITH 7m TRANSITION TOP AND BOTTOM U.N.O. ON PLAN.
  - PERMANENT BATTER SLOPES ARE TO HAVE A MAXIMUM GRADE OF 1V:3H U.N.O. BASED ON GEOTECHNICAL ASSESSMENT. PROVIDE MINIMUM 0.5m BERM BETWEEN THE BACK OF KERB OR PAVEMENT EDGES AND THE TOP OR TOE OF A BATTER.
  - ALL BATTER SLOPE WITH GRADES AT OR EXCEEDING 1V:6H ARE TO BE TURFED IMMEDIATELY OR APPROPRIATE EROSION CONTROL IS TO BE PROVIDED TO THE SATISFACTION OF THE ENGINEER.
  - ALL FOOTPATHS ARE TO FALL AWAY FROM THE BUILDING AT 2.5% NOMINAL GRADE.
  - ALL PAVEMENTS ARE TO BE SET AT 30mm BELOW THE FINISHED FLOOR LEVEL OF THE WAREHOUSE AND OFFICE AREAS. PROVIDE LOCAL FEATHERING AT DOORWAYS OR ROLLER SHUTTERS TO PROVIDE FLUSH FINISH AS REQUIRED.
  - WHERE NEW AND EXISTING INTERFACING IS REQUIRED, MATCH EXISTING LEVELS AND PROVIDE SMOOTH INTERFACE BETWEEN NEW AND EXISTING GRADIENTS. REFER ANY CONCERNS TO THE ENGINEER.

**NOTE:**  
THESE DRAWINGS ARE ISSUED FOR THE PURPOSE OF PROVIDING THE CIVIL CONCEPT ONLY FOR THE DESIGN AND CONSTRUCT TENDER.  
**THIS IS NOT DETAILED DESIGN**  
THE CIVIL DETAILS SHALL BE SUBJECT TO CHANGE DURING THE DETAILED DESIGN STAGE

**Department of Planning, Housing and Infrastructure**

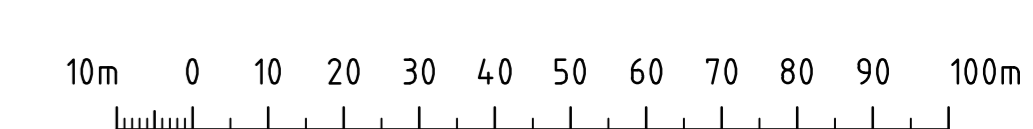
Issued under the Environmental Planning and Assessment Act 1979

Approved Application: **SSD-76913969**

Granted on: **26 February 2026**

Signed: T.W      Sheet Number: **15** of **19**

**FOR APPROVAL**



|  |  |                        |            |        |               |         |  |                       |   |   |   |                    |
|--|--|------------------------|------------|--------|---------------|---------|--|-----------------------|---|---|---|--------------------|
| ISSUED FOR SDA APPROVAL<br>ISSUED FOR SDA APPROVAL<br>ISSUED FOR INFORMATION<br>AMENDMENTS | 18.12.25<br>26.09.25<br>28.11.24<br>DATE | P2<br>P1<br>A<br>ISSUE | CLIENT<br> | PM<br> | ARCHITECT<br> | BUILDER | PROJECT<br><b>ALDI SYDNEY DISTRIBUTION CENTRE</b><br>STATE SIGNIFICANT DEVELOPMENT APPLICATION<br>EASTERN RING ROAD, BADGERY'S CREEK | CONSULT AUSTRALIA<br> | Costin Roe Consulting Pty Ltd.<br>ALN 50 003 696 446<br>PO Box 2419 Sydney NSW 1220<br>Levels 4 & 5 Westfield Street, Millers Point NSW 2000<br>p: +61 2 9251 7699<br>e: mail@costinroe.com.au<br>w: costinroe.com.au | <br><b>CIVIL &amp; STRUCTURAL ENGINEERS</b> | DRAWING TITLE<br><b>FINISHED LEVELS KEY PLAN</b><br>DRAWING No: <b>SDY-CRC-DRW-CV-500</b><br>COSTIN ROE DRAWING No: <b>C015146.01-SSDA500</b> | ISSUE<br><b>P2</b> |
|--|--|------------------------|------------|--------|---------------|---------|--|-----------------------|---|---|---|--------------------|