



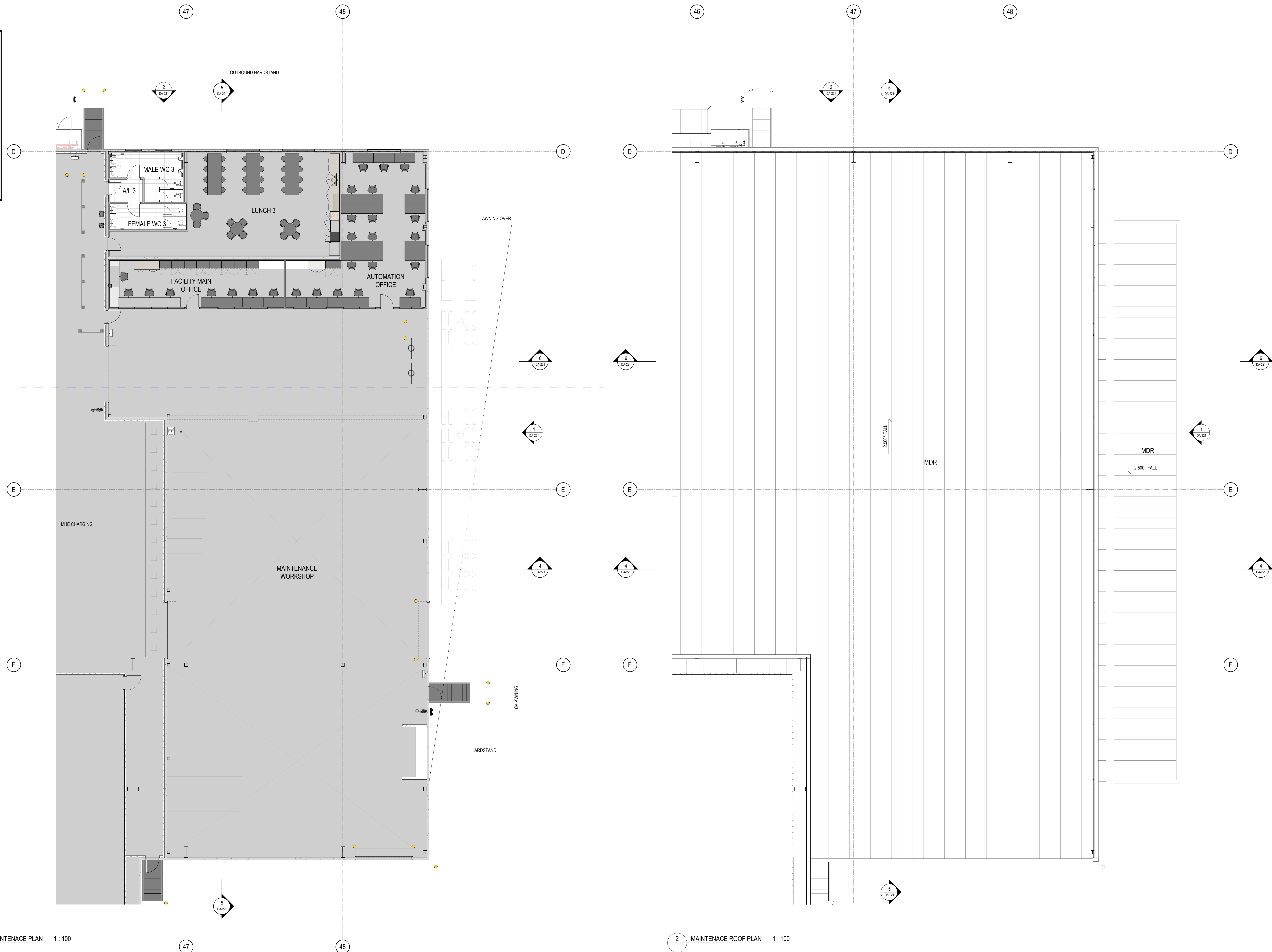
Department of Planning,  
Housing and Infrastructure

Issued under the Environmental Planning and Assessment Act 1979

Approved Application: SSD-76913969

Granted on: 26 February 2026

Signed: T.W Sheet Number: 20 of 23



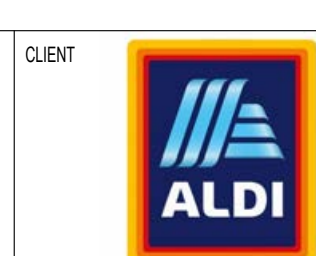
1 MAINTENANCE PLAN 1:100

2 MAINTENANCE ROOF PLAN 1:100

DA ISSUE



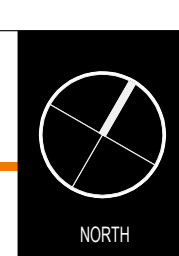
#	ISSUE AMENDMENTS	DATE
01	DA ISSUE	06.12.24
02	UPDATED DA SET ISSUE	28.10.24
03	UPDATED PRELIMINARY DA SET ISSUE	17.09.24
04	UPDATED PRELIMINARY DA SET ISSUE	20.08.24
05	UPDATED PRELIMINARY DA SET ISSUE	11.08.24
06	UPDATED PRELIMINARY DA SET ISSUE	07.08.24
07	DESCRIPTION	DATE



CLIENT

ALDI SYD ADC

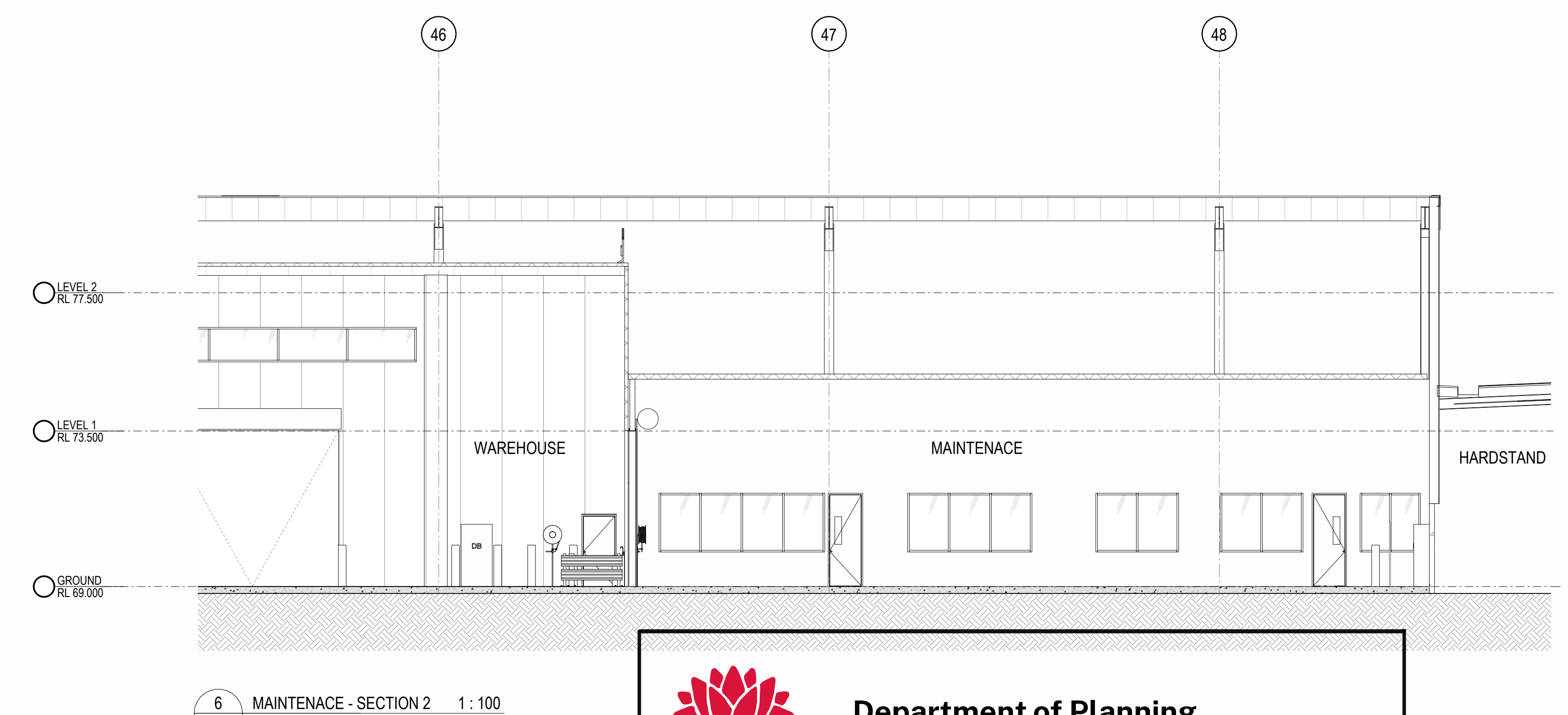
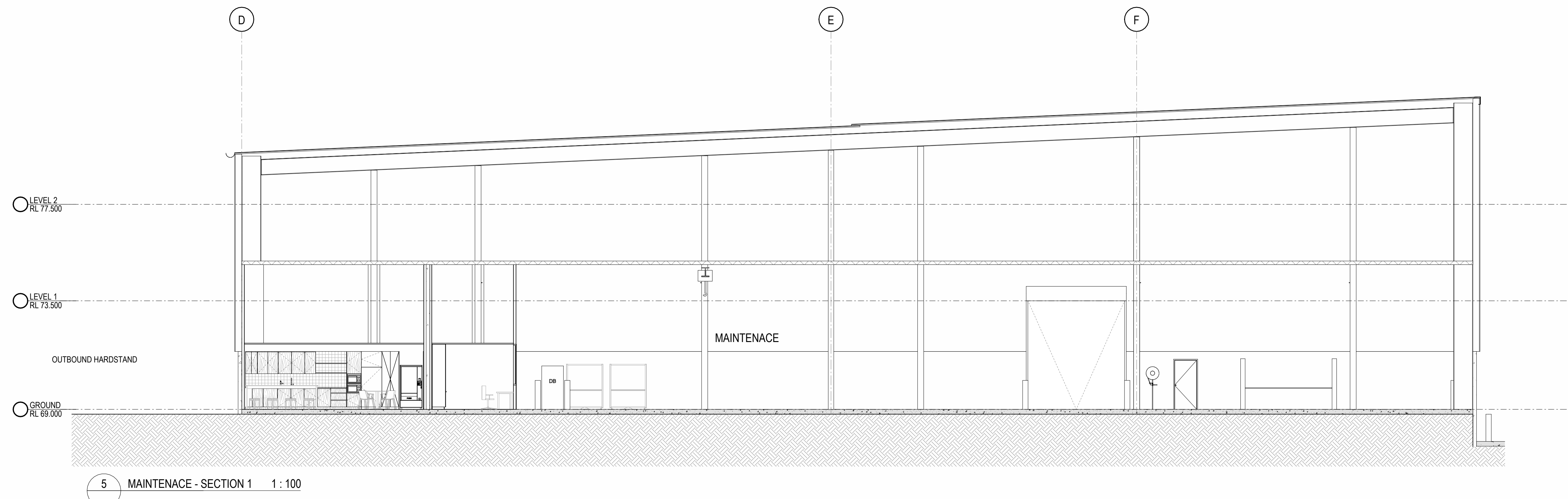
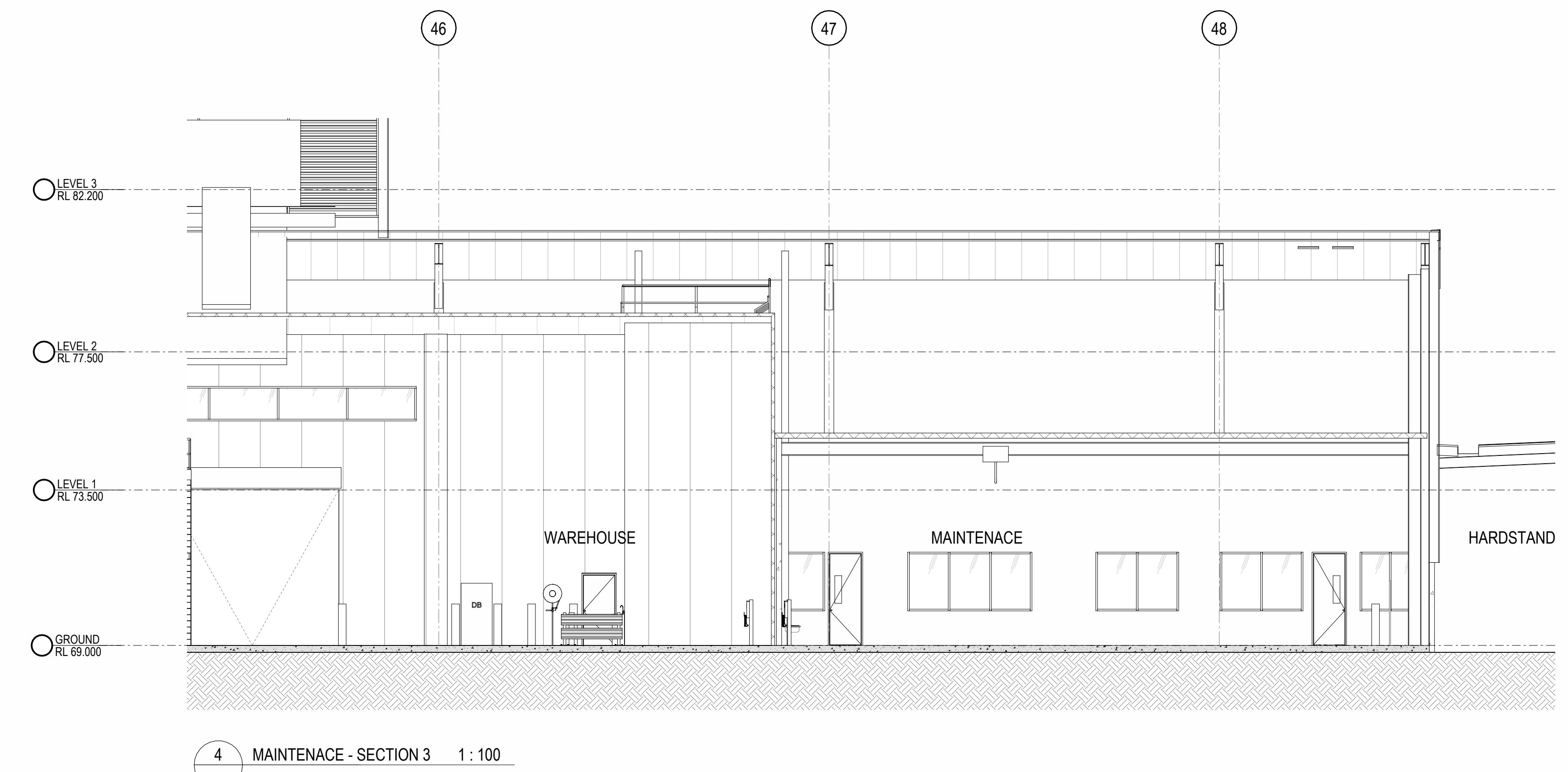
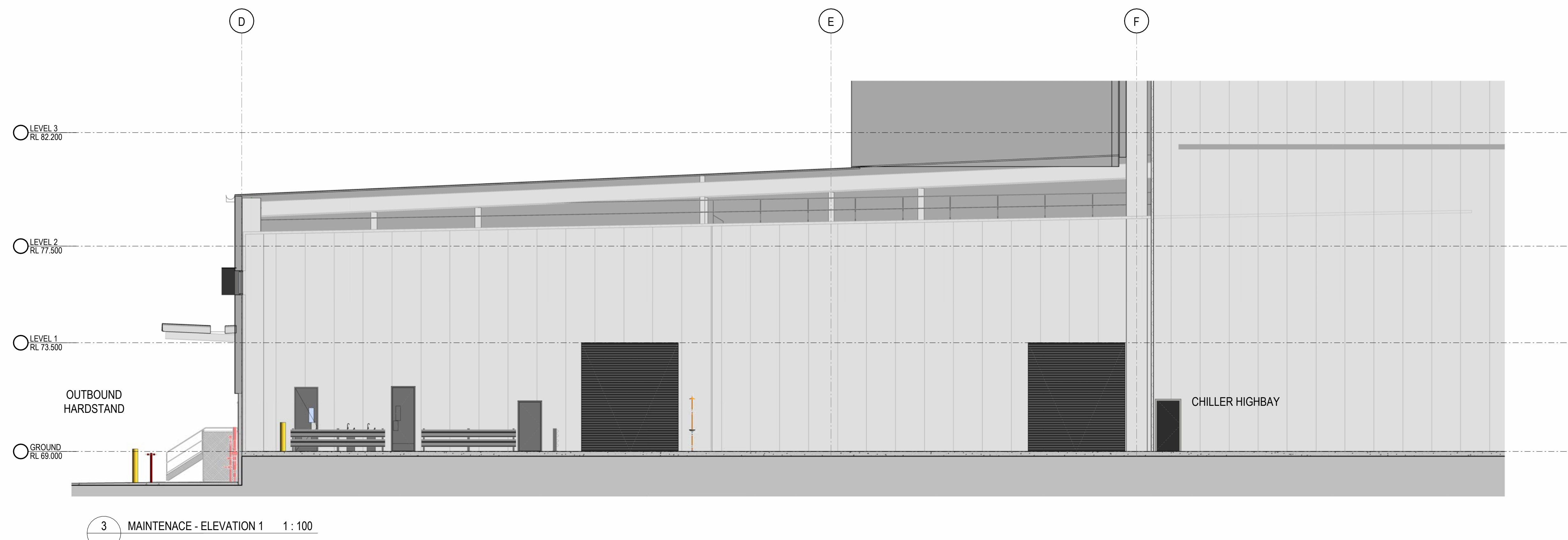
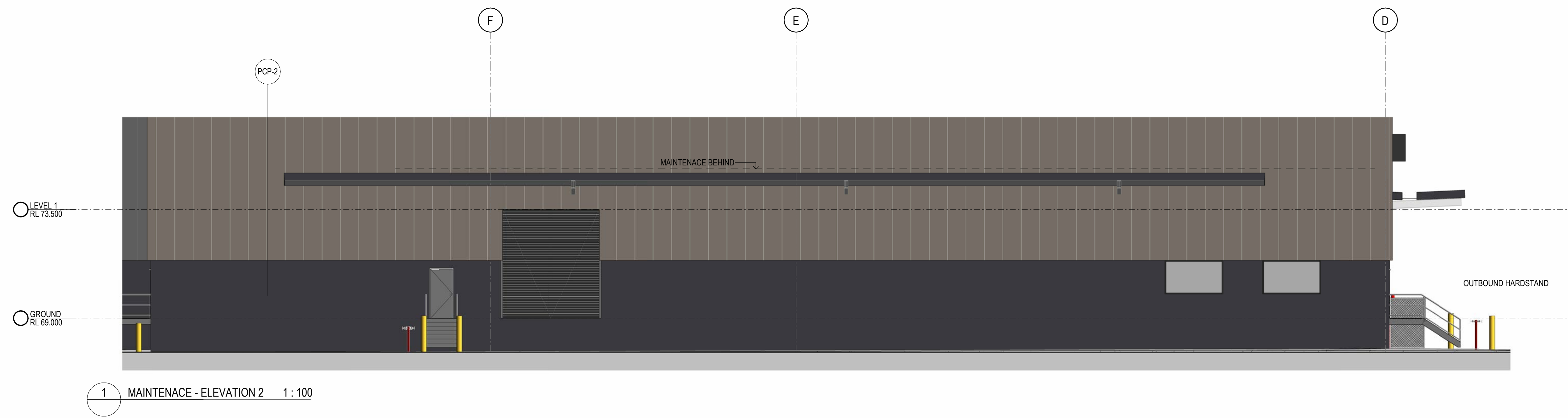
475 BADGERYS CREEK ROAD, BRADFIELD



THESE DESIGN PLANS & SPECIFICATIONS AND THE COPYRIGHT THEREIN ARE THE PROPERTY OF THE ISSUING ENGINEER AND MUST BE USED, REPRODUCED OR COPIED WHOLLY OR IN PART WITHOUT THE WRITTEN PERMISSION OF THE ENGINEER.  
FOR ALL DIMENSIONS TO BE CHECKED ON SITE.  
THIS DOCUMENT NOT TO BE USED FOR CONSTRUCTION UNLESS SPECIFICALLY NOTED OTHERWISE.

DATE	SCALE	PROJECT NO.	DWG NO.	REVISION
19.09.25	1:0 @ A0 1:0 @ A3	24110	DA-220	P8

MAINTENANCE SHEET 1



INDICATIVE EXTERNAL FINISHES FINISHES SUBJECT TO AUTHORITY AND CLIENT APPROVAL					
BWK-1 - BRICK FACADE - BOWRAL 76 HEREFORD BRONZE	GLZ-2 - GLAZED FACADE SYSTEM - GREY TINT	PCP-2 - PRECAST CONCRETE PANEL - MONUMENT PAINT FINISH	MWC-4 - METAL WALL CLADDING - BASALT	MDR-3 - METAL ROOF - DOVER WHITE	DP-1 - DOWNPIPE - MONUMENT
BWK-2 - BRICK FACADE - BOWRAL 76 SIMMENTAL SILVER	GLZ-3 - GLAZED FACADE SYSTEM - COLOURBACK - MONUMENT	MWC-1 - METAL WALL CLADDING - DUNE	MWC-5 - METAL WALL CLADDING - PAINT FINISH - ALDI ORANGE	RSD-1 - ROLLER SHUTTER DOOR - MONUMENT	EG-1 - EAVES GUTTER - MONUMENT
AFG-1 - ALU. FRAME GLAZING - MONUMENT	GLZ-4 - GLAZED FACADE SYSTEM - FROSTED GLASS	MWC-2 - METAL WALL CLADDING - MONUMENT	MDR-1 - METAL ROOF - DOVER WHITE	SC-1 - STEEL COLUMNS - PREFINISHED - MONUMENT	FAS-1 - FOLDED ALU. FASCIA - MONUMENT
GLZ-1 - GLAZED FACADE SYSTEM - CLEAR	PCP-1 - PRECAST CONCRETE PANEL - NATURAL FINISH	MWC-3 - METAL WALL CLADDING - GULLY	MDR-2 - METAL ROOF - DOVER WHITE		

**NSW GOVERNMENT**  
**Department of Planning, Housing and Infrastructure**

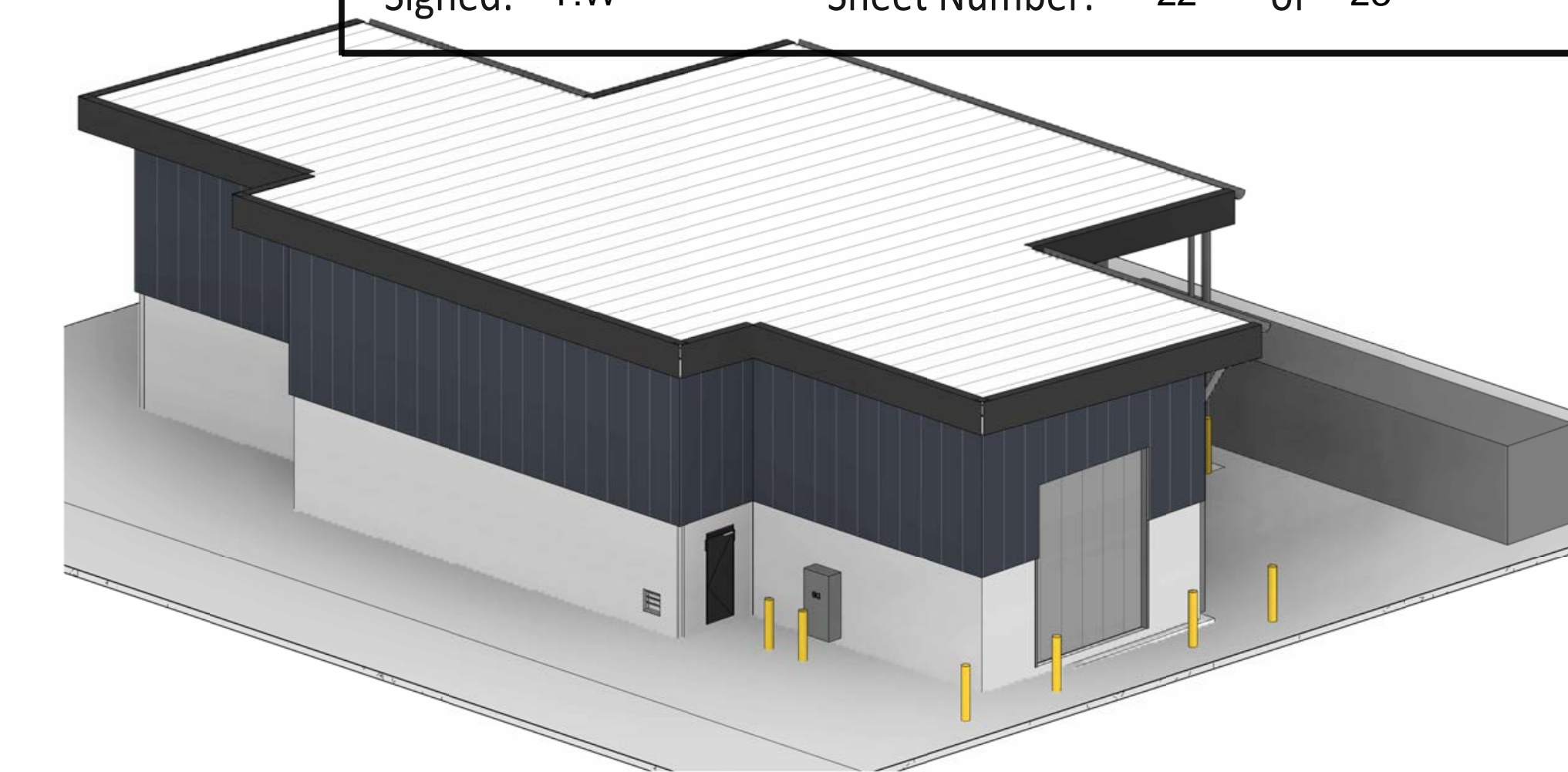
*Issued under the Environmental Planning and Assessment Act 1979*

Approved Application: SSD-76913969

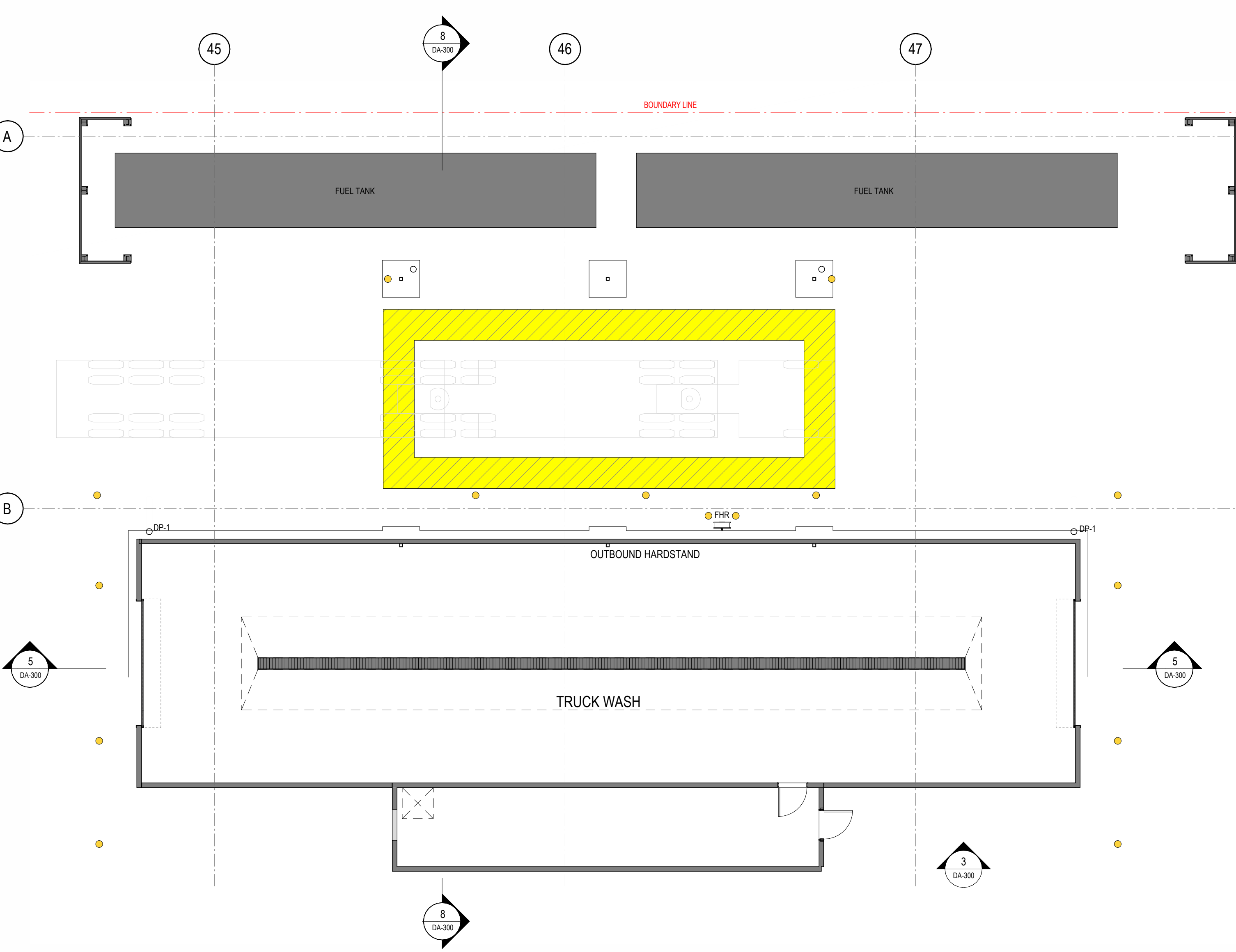
Granted on: 26 February 2026

Signed: T.W Sheet Number: 21 of 23

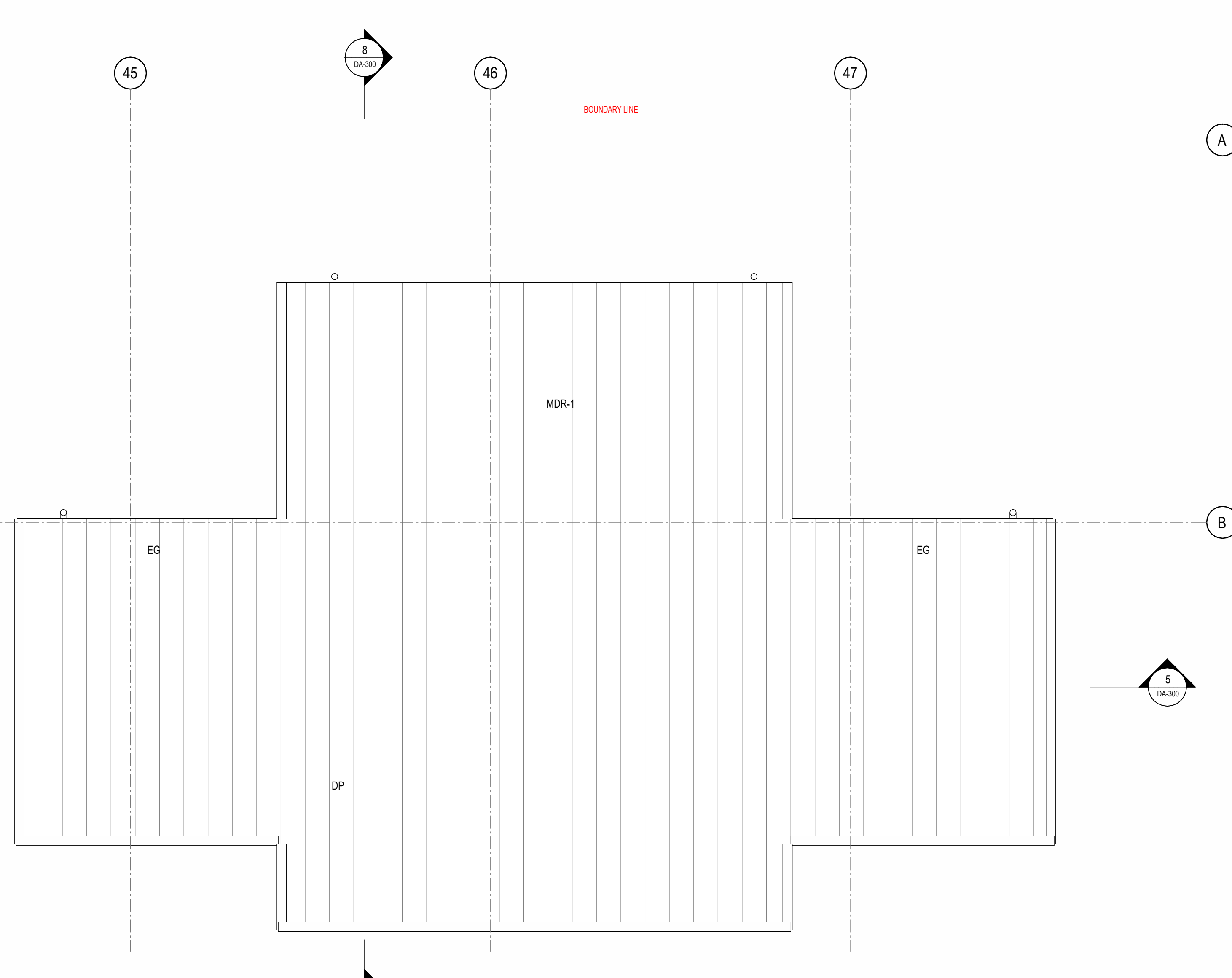
**DA ISSUE**



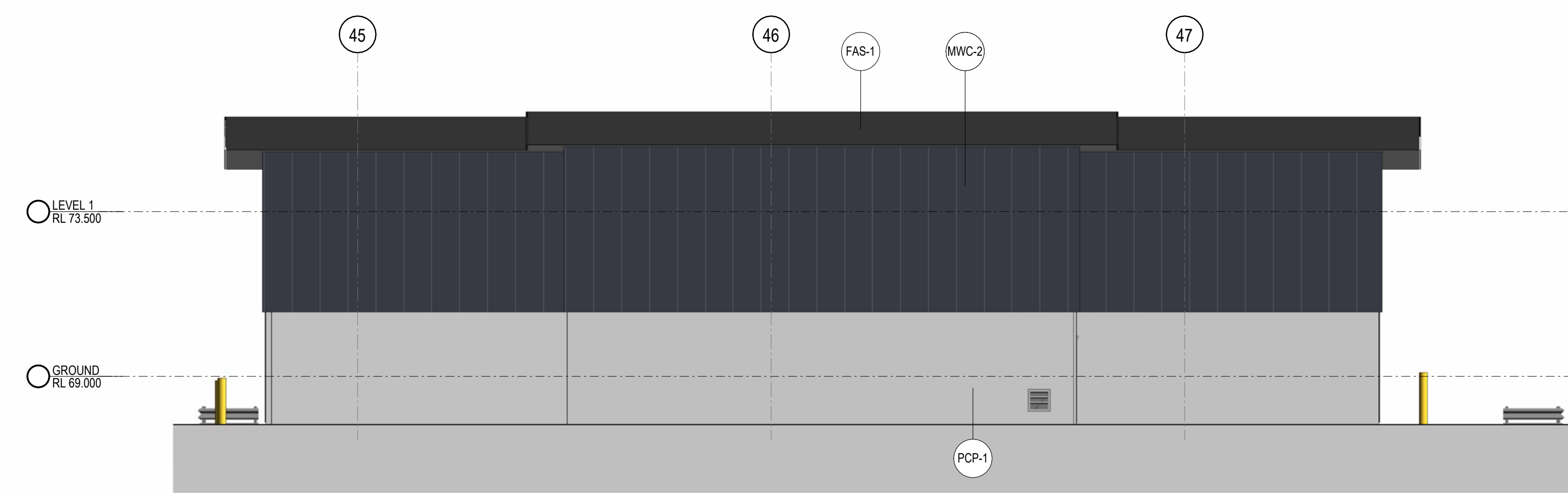
9 TRUCK WASH - 3D VIEW



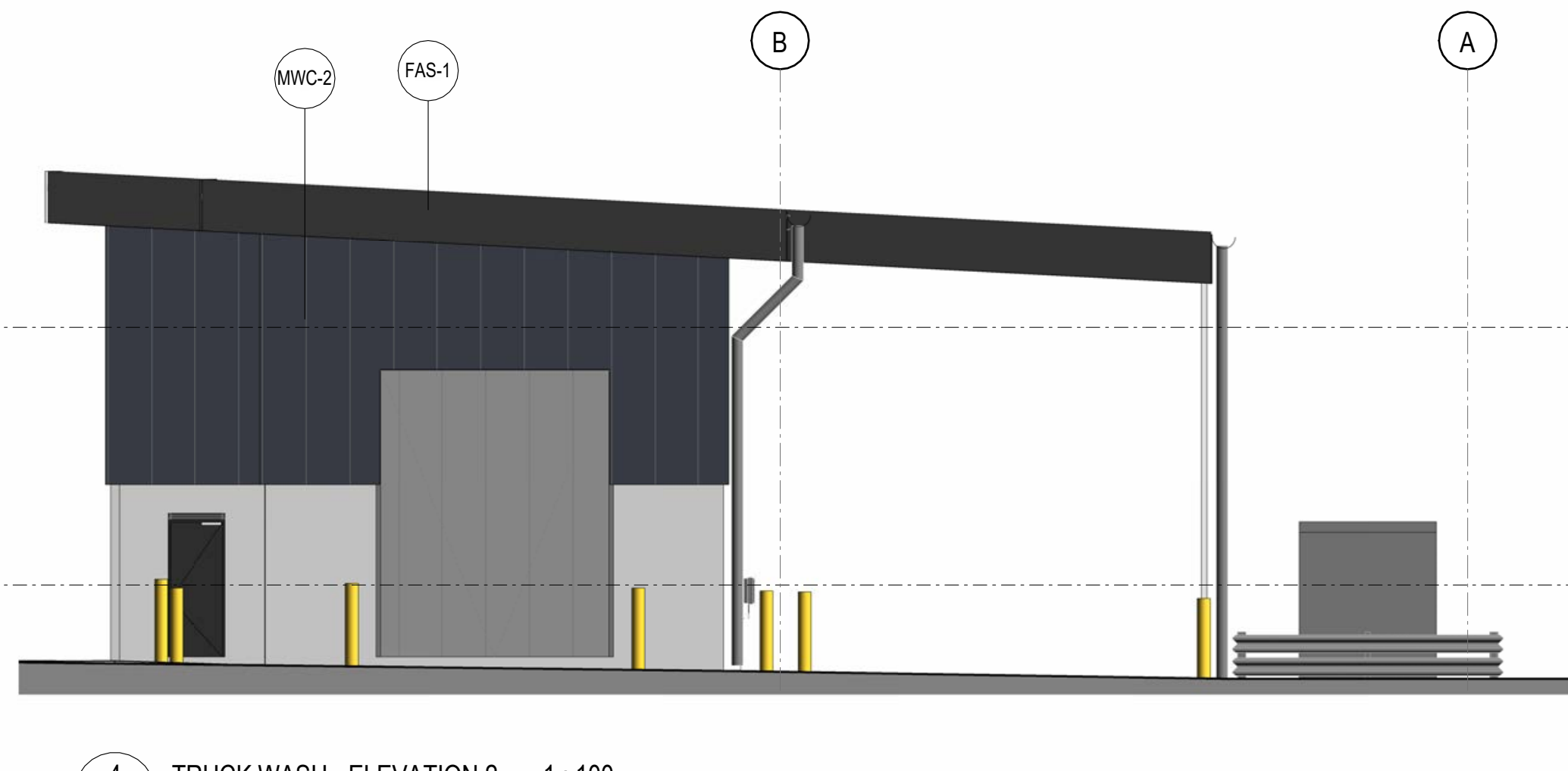
1 TRUCK WASH PLAN 1:100



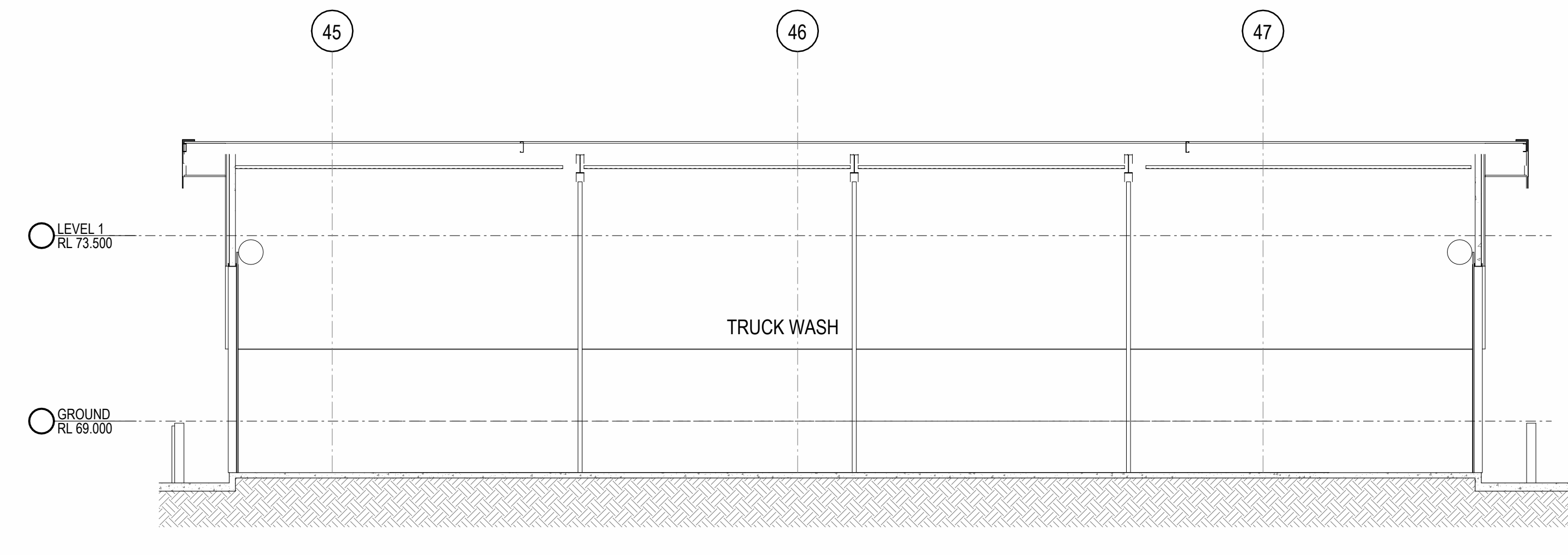
2 TRUCK WASH ROOF PLAN 1:100



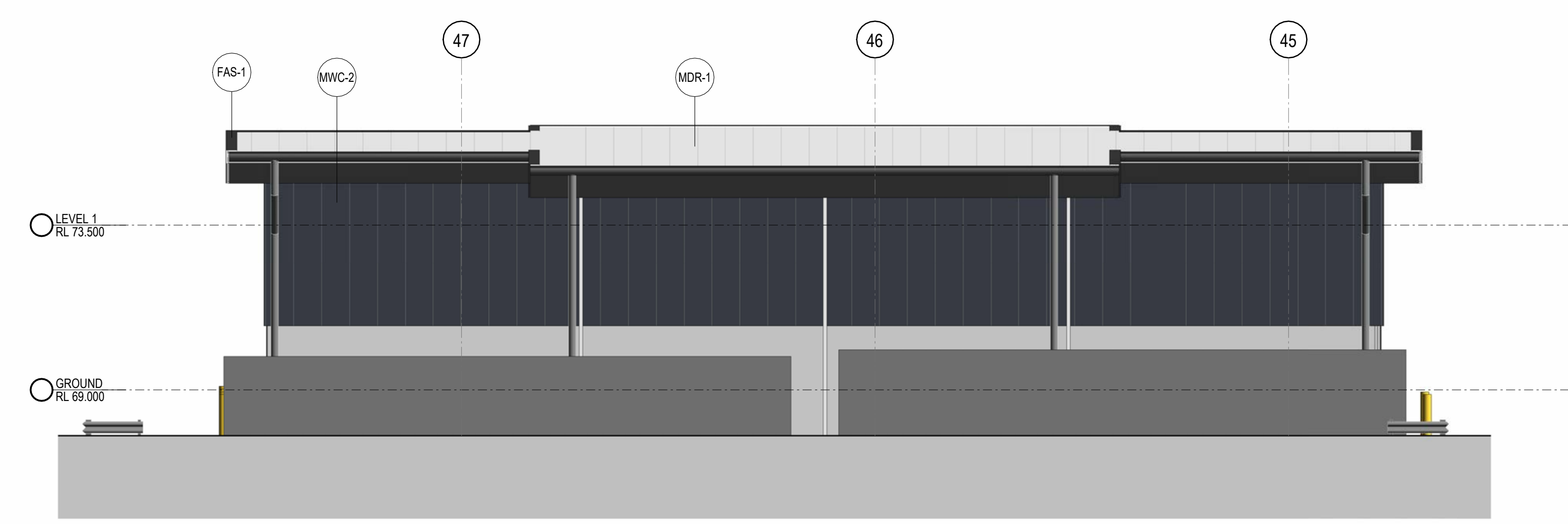
3 TRUCK WASH - ELEVATION 1 1:100



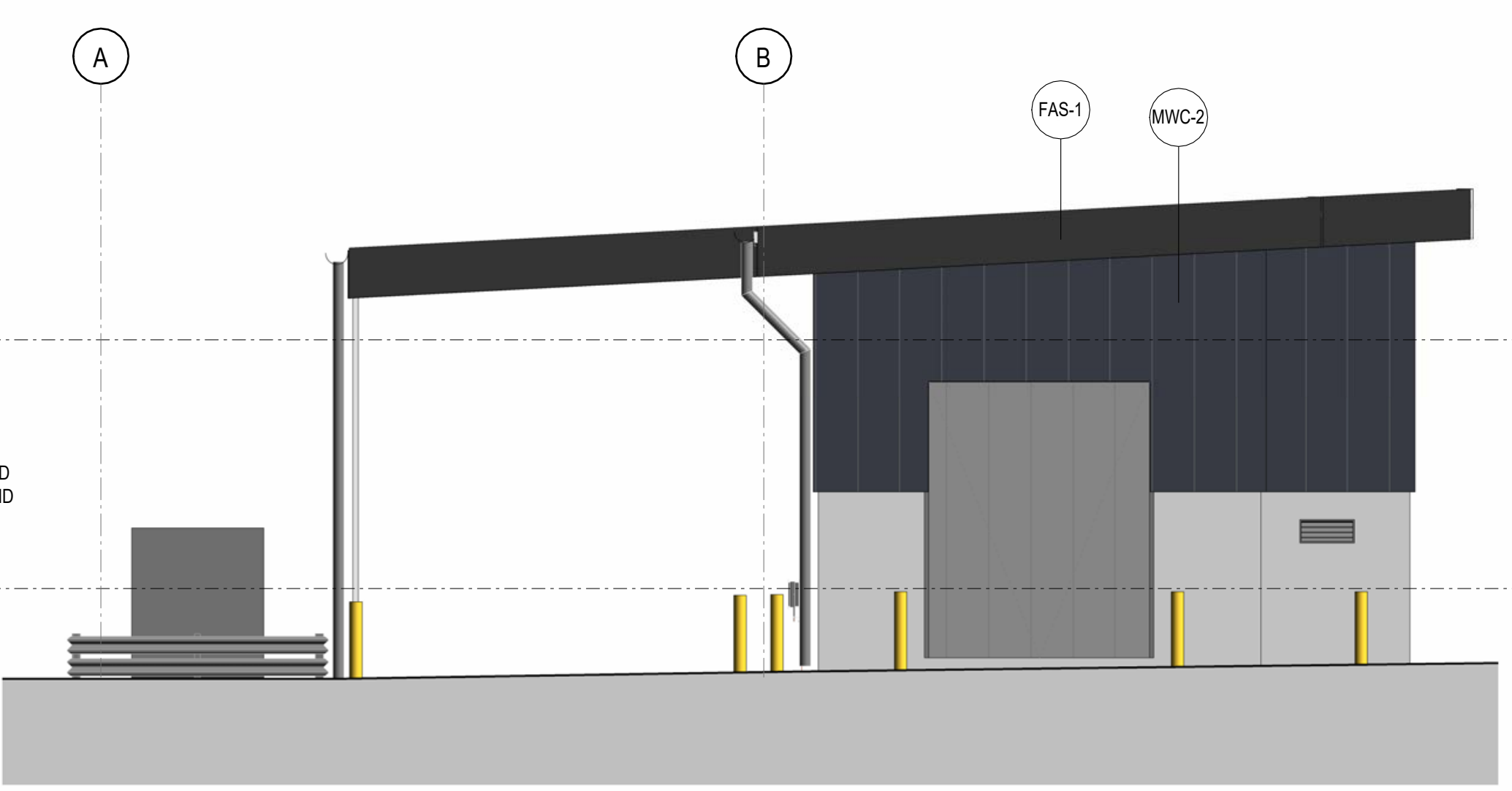
4 TRUCK WASH - ELEVATION 2 1:100



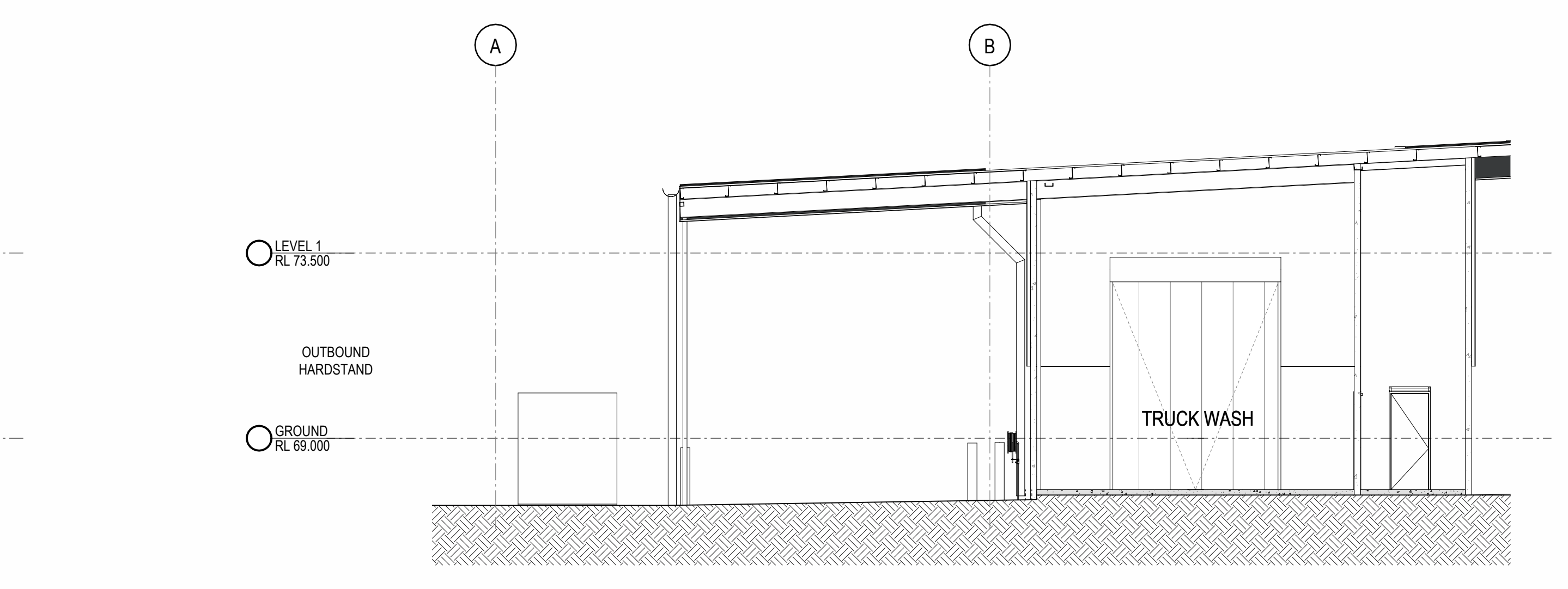
5 TRUCK WASH - SECTION 1 1:100



6 TRUCK WASH - ELEVATION 3 1:100



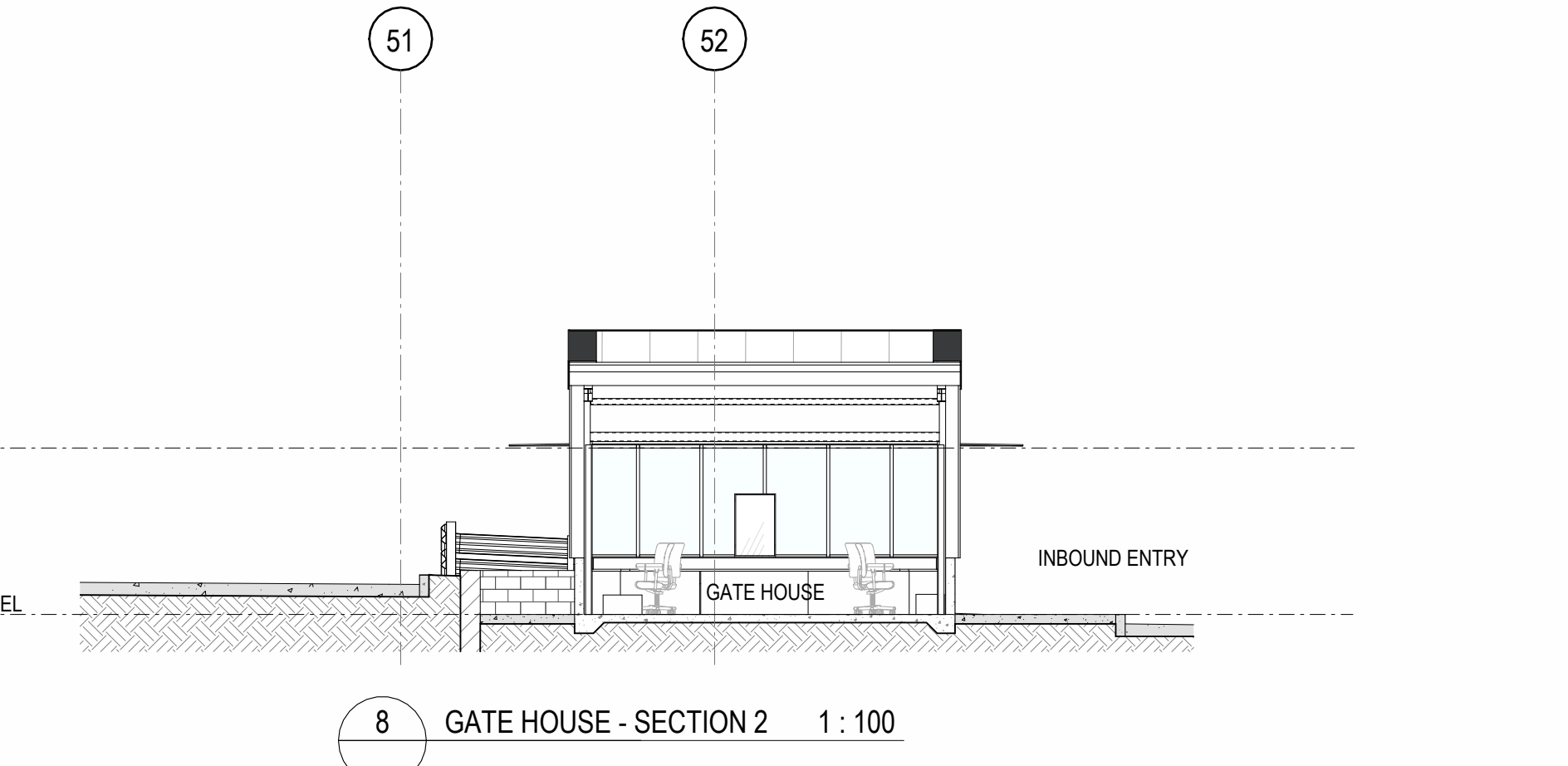
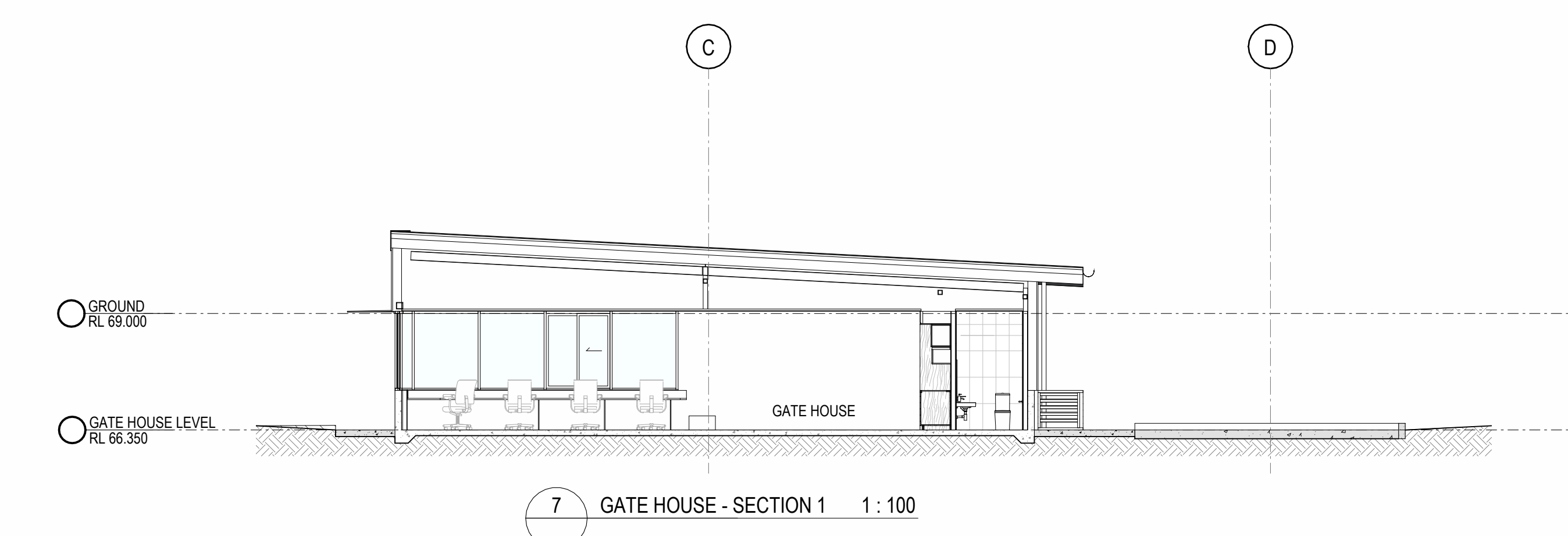
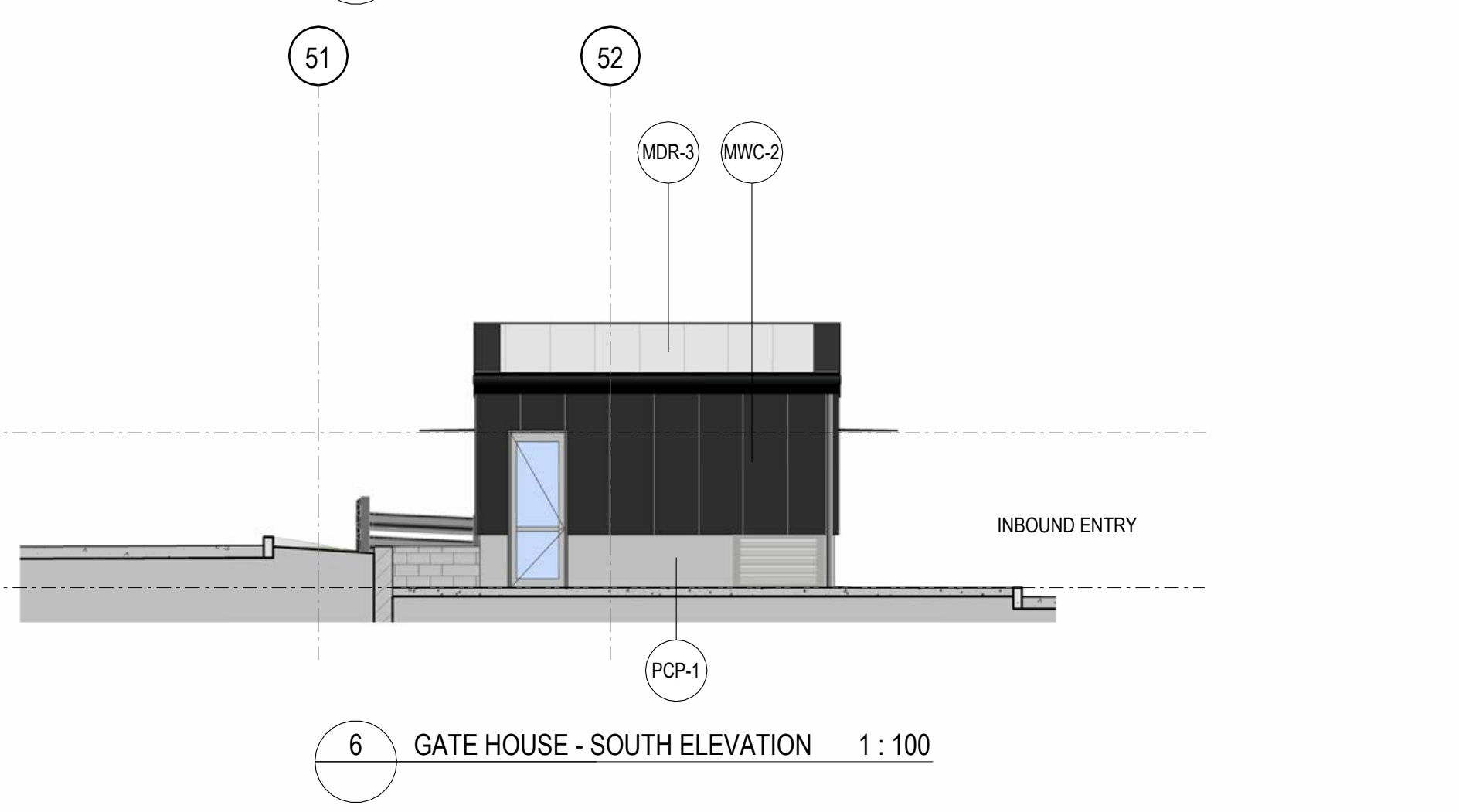
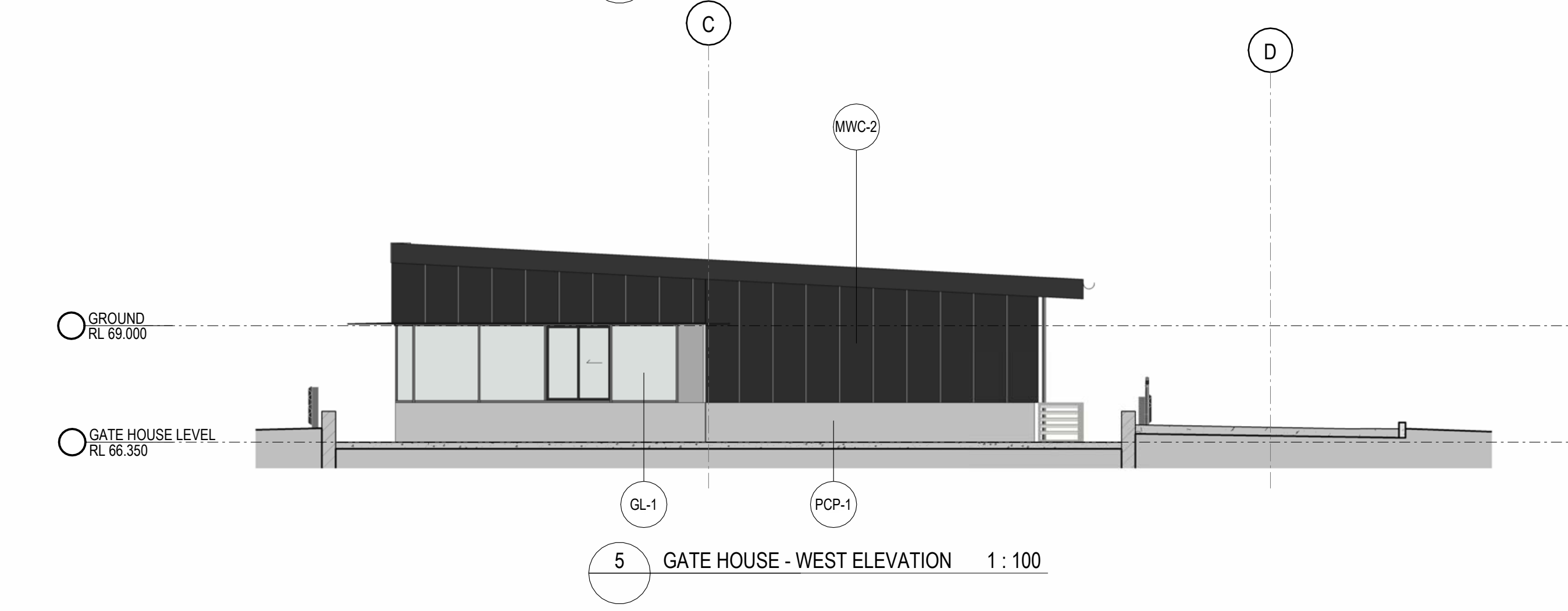
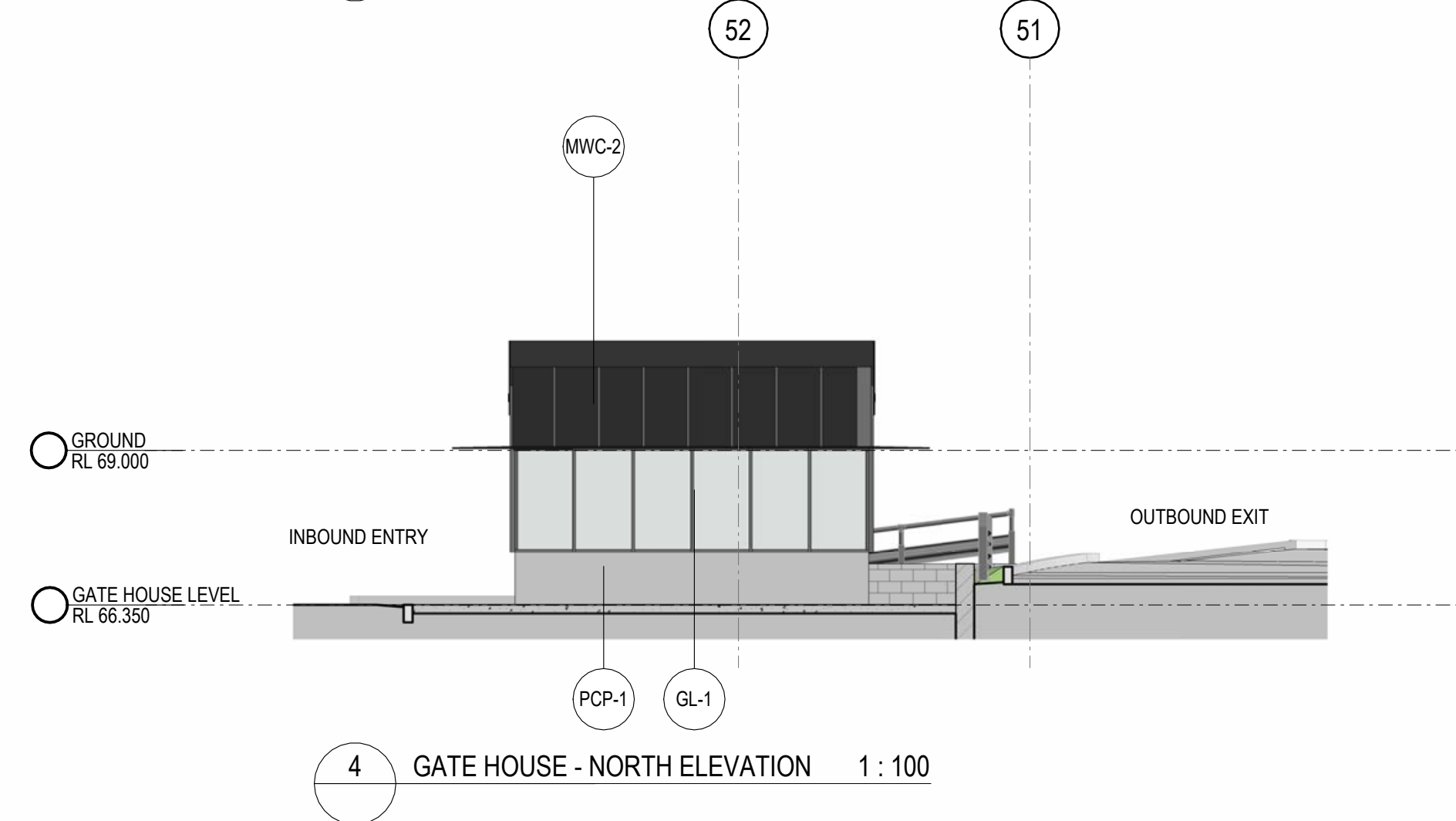
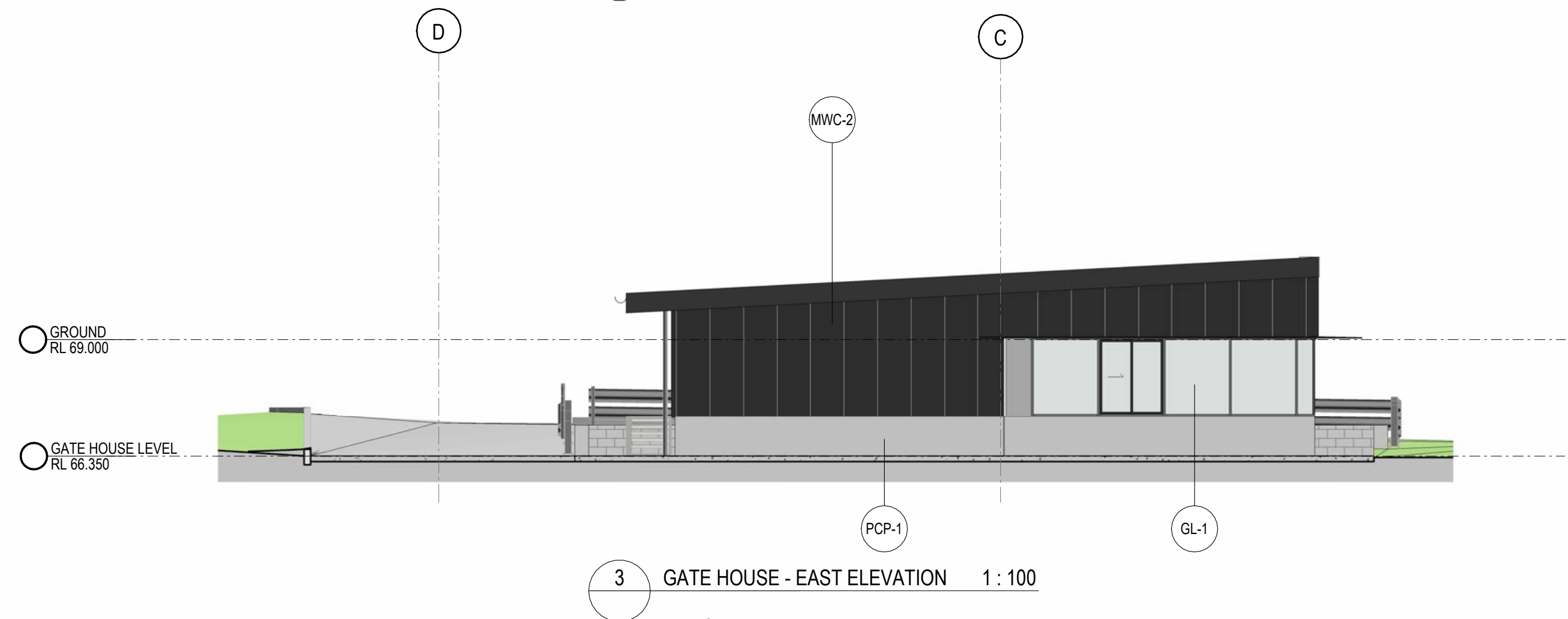
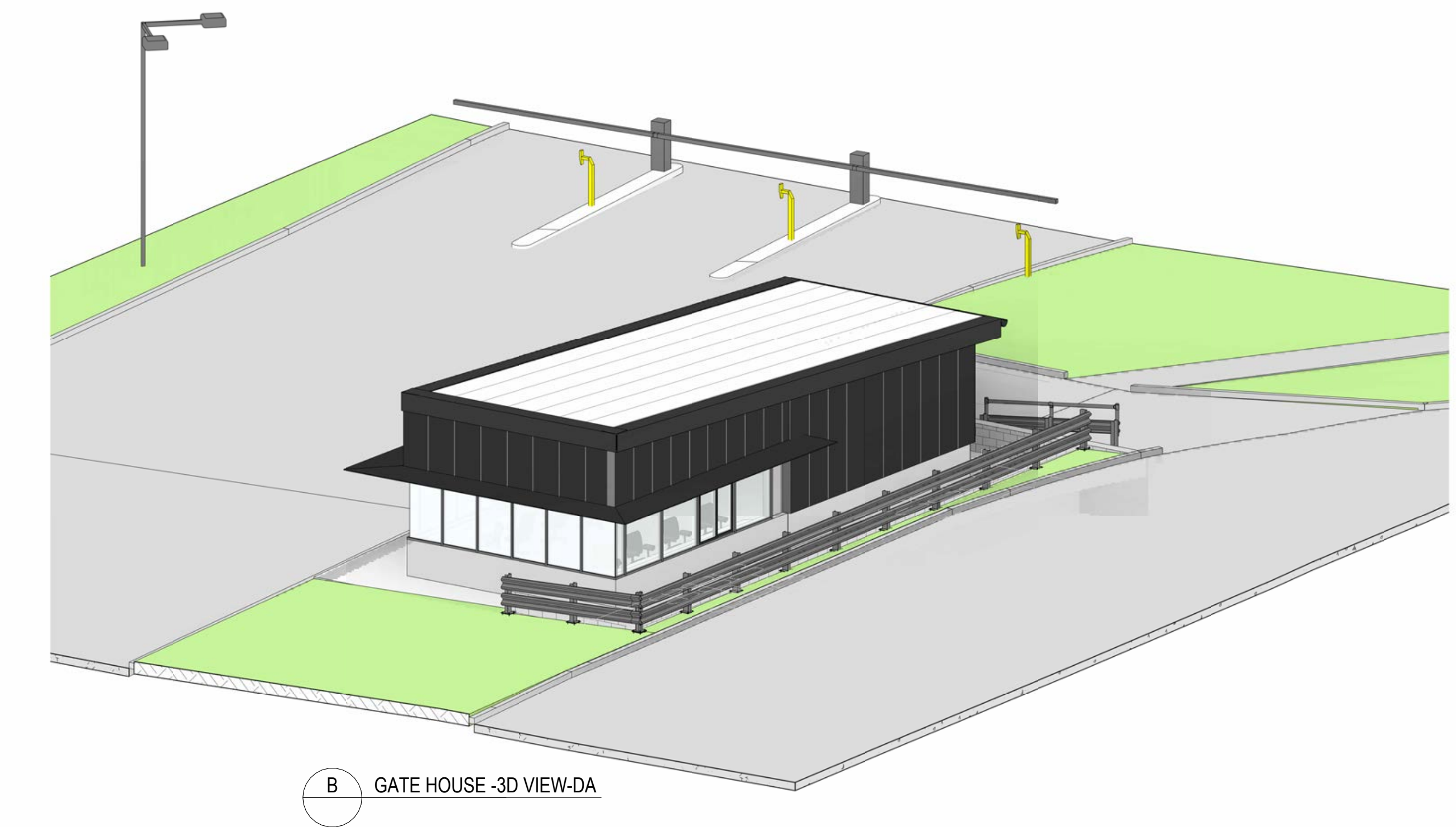
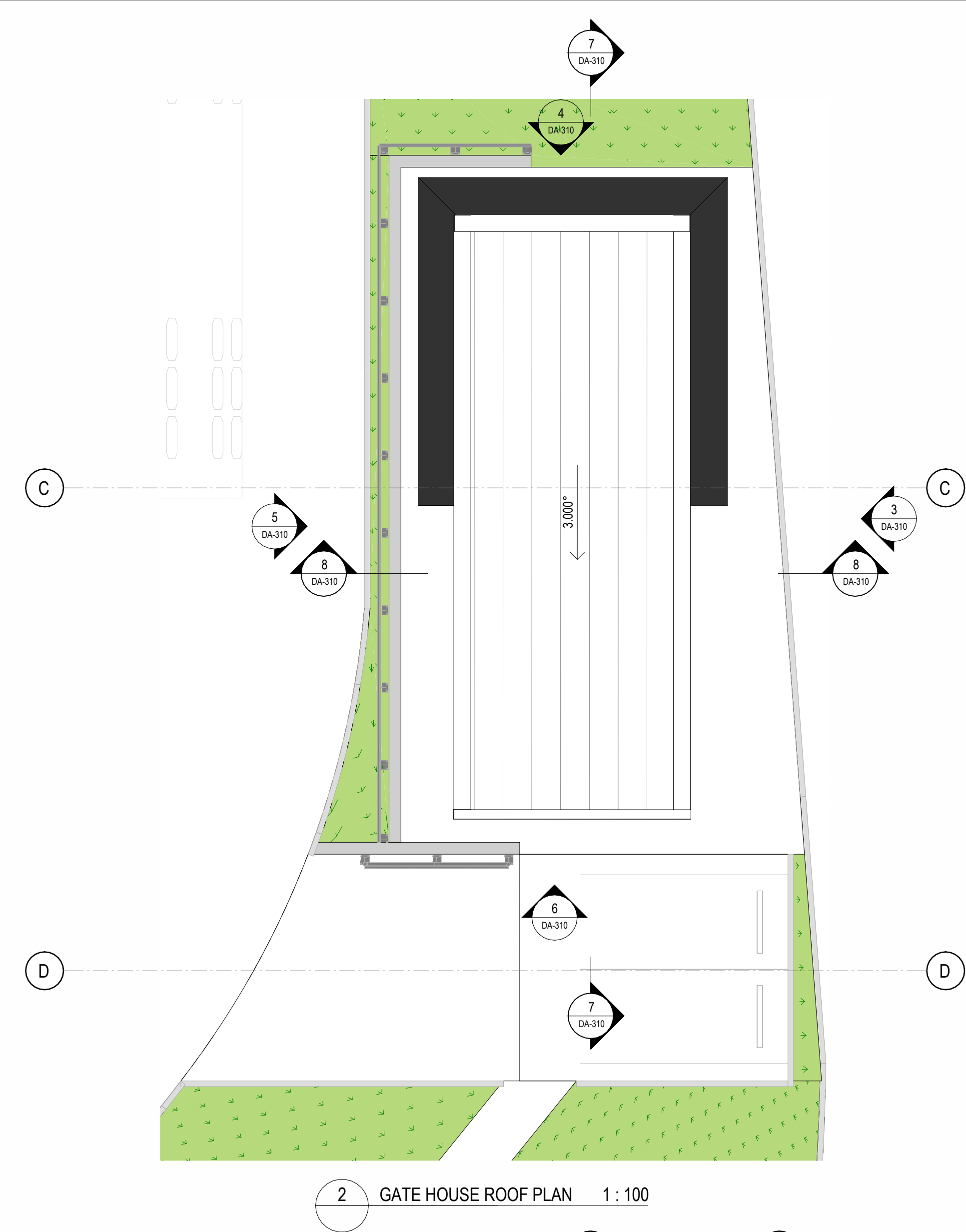
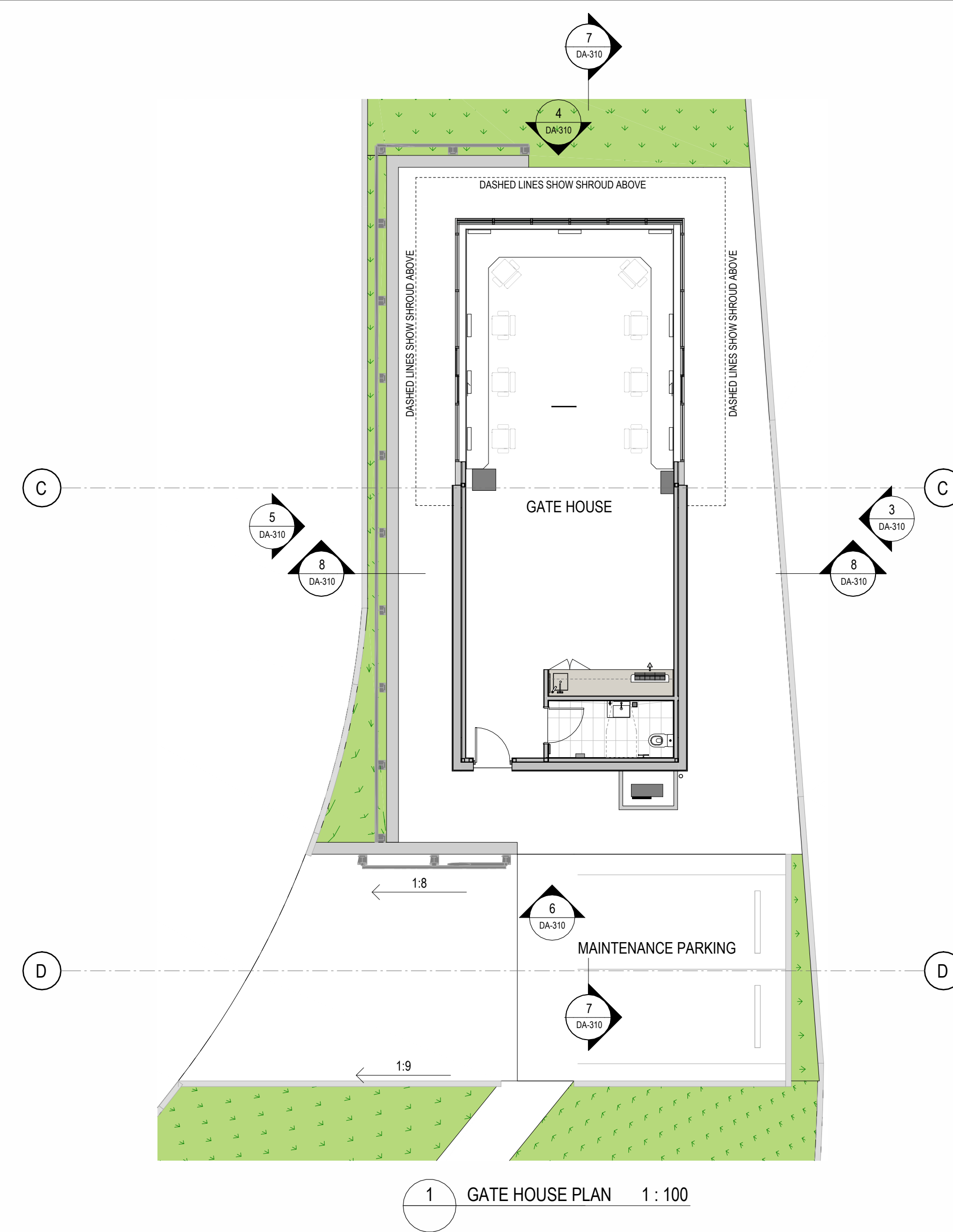
7 TRUCK WASH - ELEVATION 4 1:100



8 TRUCK WASH - SECTION 2 1:100

INDICATIVE EXTERNAL FINISHES FINISHES SUBJECT TO AUTHORITY AND CLIENT APPROVAL

BWK-1 - BRICK FACADE - BOWRAL 76 HEREFORD BRONZE	GLZ-2 - GLAZED FACADE SYSTEM - GREY TINT	PCP-2 - PRECAST CONCRETE PANEL - MONUMENT PAINT FINISH	MWC-4 - METAL WALL CLADDING - BASALT	MDR-3 - METAL ROOF - DOVER WHITE	DP-1 - DOWNPIPE - MONUMENT
BWK-2 - BRICK FACADE - BOWRAL 76 SIMMENTAL SILVER	GLZ-3 - GLAZED FACADE SYSTEM - COLOURBACK - MONUMENT	MWC-1 - METAL WALL CLADDING - DUNE	MWC-5 - METAL WALL CLADDING - PAINT FINISH - ALDI ORANGE	MDR-1 - METAL ROOF - DOVER WHITE	RSD-1 - ROLLER SHUTTER DOOR - MONUMENT
AFG-1 - ALU. FRAME GLAZING - MONUMENT	GLZ-4 - GLAZED FACADE SYSTEM - FROSTED GLASS	MWC-2 - METAL WALL CLADDING - MONUMENT	MDR-2 - METAL ROOF - DOVER WHITE	SC-1 - STEEL COLUMNS - PREFINISHED - MONUMENT	EG-1 - EAVES GUTTER - MONUMENT
GLZ-1 - GLAZED FACADE SYSTEM - CLEAR	PCP-1 - PRECAST CONCRETE PANEL - NATURAL FINISH	MWC-3 - METAL WALL CLADDING - GULLY	FAS-1 - FOLDED ALU. FASCIA - MONUMENT		



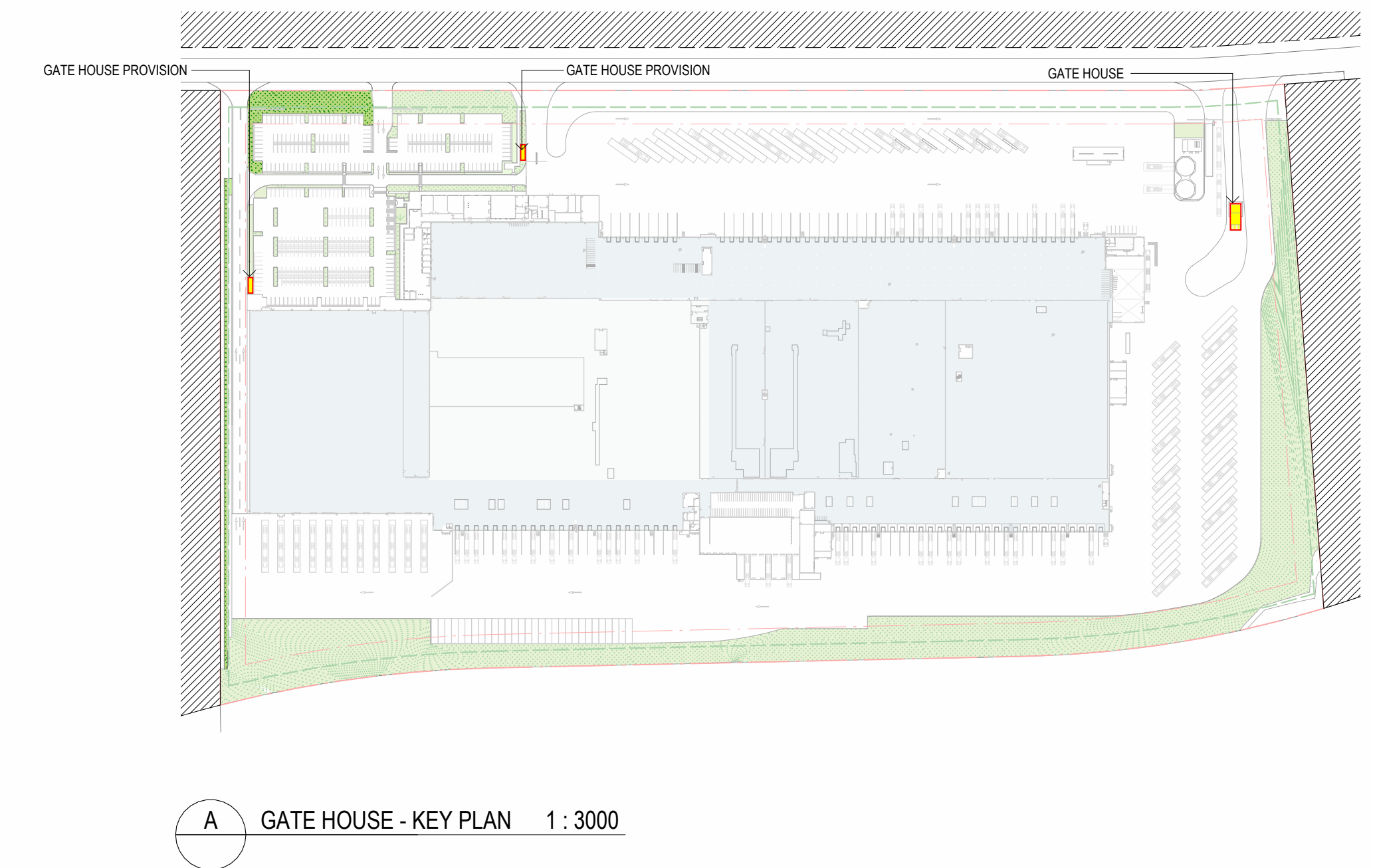
**Department of Planning,  
Housing and Infrastructure**

Issued under the Environmental Planning and Assessment Act 1979

Approved Application: **SSD-76913969**

Granted on: **26 February 2026**

Signed: T.W. Sheet Number: **23** of **23**



INDICATIVE EXTERNAL FINISHES FINISHES SUBJECT TO AUTHORITY AND CLIENT APPROVAL

BWK-1 - BRICK FACADE - BOWRAL 76 HEREFORD BRONZE	GLZ-2 - GLAZED FACADE SYSTEM - GREY TINT	PCP-2 - PRECAST CONCRETE PANEL - MONUMENT PAINT FINISH	MWC-4 - METAL WALL CLADDING - BASALT	MDR-3 - METAL ROOF - DOVER WHITE	DP-1 - DOWNPIPE - MONUMENT
BWK-2 - BRICK FACADE - BOWRAL 76 SIMMENTAL SILVER	GLZ-3 - GLAZED FACADE SYSTEM - COLOURBACK - MONUMENT	MWC-1 - METAL WALL CLADDING - DUNE	MWC-5 - METAL WALL CLADDING - PAINT FINISH - ALDI ORANGE	RSD-1 - ROLLER SHUTTER DOOR - MONUMENT	EG-1 - EAVES GUTTER - MONUMENT
AFG-1 - ALU. FRAME GLAZING - MONUMENT	GLZ-4 - GLAZED FACADE SYSTEM - FROSTED GLASS	MWC-2 - METAL WALL CLADDING - MONUMENT	MDR-1 - METAL ROOF - DOVER WHITE	SC-1 - STEEL COLUMNS - PREFINISHED - MONUMENT	
GLZ-1 - GLAZED FACADE SYSTEM - CLEAR	PCP-1 - PRECAST CONCRETE PANEL - NATURAL FINISH	MWC-3 - METAL WALL CLADDING - GULLY	MDR-2 - METAL ROOF - DOVER WHITE	FAS-1 - FOLDED ALU. FASCIA - MONUMENT	

**DA ISSUE**