



Department of Planning,  
Housing and Infrastructure

Issued under the Environmental Planning and Assessment Act 1979

Approved Application: SSD-76913969

Granted on: 26 February 2026

Signed: T.W Sheet Number: 14 of 23

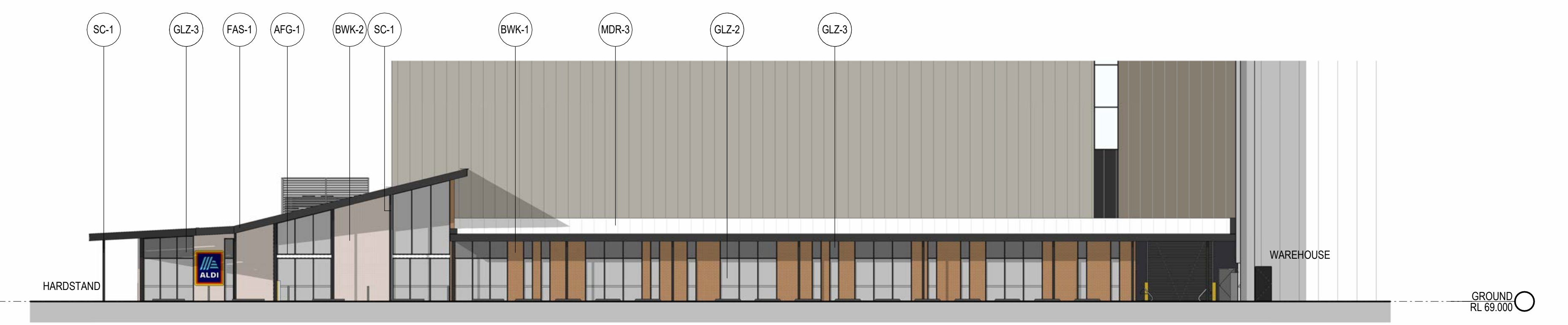


1 MAIN OFFICE GROUND FLOOR PLAN 1:200

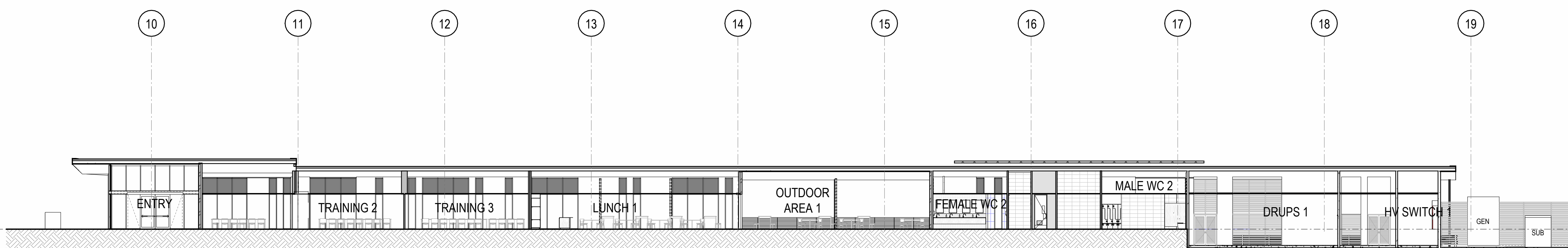
2 DA-200\_3D



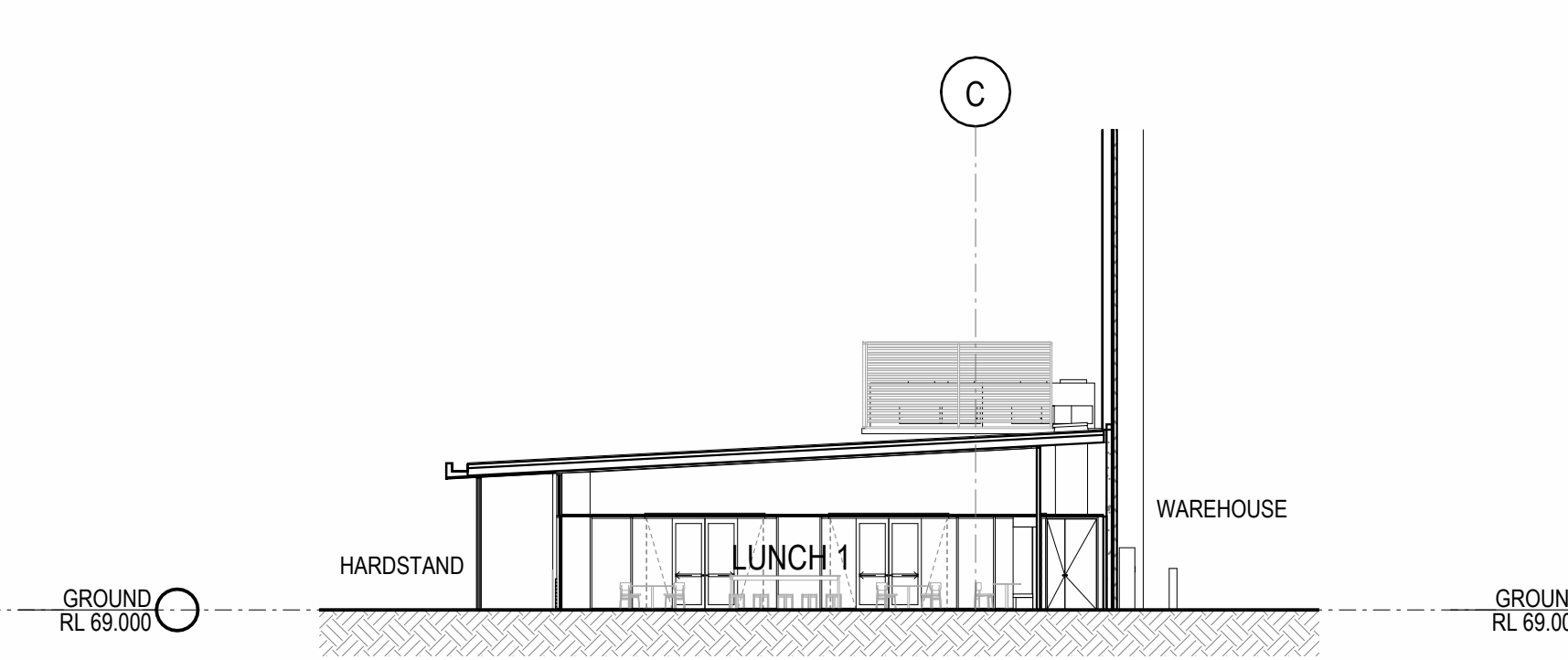
4 OFFICE ELEVATION 1 1:200



5 OFFICE ELEVATION 2 1:200



6 OFFICE SECTION 1 1:200



7 OFFICE SECTION 2 1:200

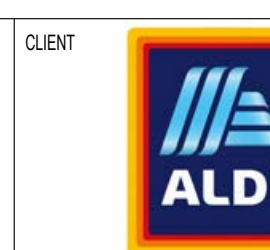
INDICATIVE EXTERNAL FINISHES FINISHES SUBJECT TO AUTHORITY AND CLIENT APPROVAL

<b>BWK-1</b> - BRICK FACADE - BOWRAL 76 HEREFORD BRONZE	<b>GLZ-2</b> - GLAZED FACADE SYSTEM - GREY TINT	<b>PCP-2</b> - PRECAST CONCRETE PANEL - MONUMENT PAINT FINISH	<b>MWC-4</b> - METAL WALL CLADDING - BASALT	<b>MDR-3</b> - METAL ROOF - DOVER WHITE	<b>DP-1</b> - DOWNPIPE - MONUMENT
<b>BWK-2</b> - BRICK FACADE - BOWRAL 76 SIMMENTAL SILVER	<b>GLZ-3</b> - GLAZED FACADE SYSTEM - COLOURBACK - MONUMENT	<b>MWC-1</b> - METAL WALL CLADDING - DUNE	<b>MWC-5</b> - METAL WALL CLADDING - PAINT FINISH - ALDI ORANGE	<b>RSD-1</b> - ROLLER SHUTTER DOOR - MONUMENT	<b>EG-1</b> - EAVES GUTTER - MONUMENT
<b>AFG-1</b> - ALU. FRAME GLAZING - MONUMENT	<b>GLZ-4</b> - GLAZED FACADE SYSTEM - FROSTED GLASS	<b>MWC-2</b> - METAL WALL CLADDING - MONUMENT	<b>MDR-1</b> - METAL ROOF - DOVER WHITE	<b>SC-1</b> - STEEL COLUMNS - PREFINISHED - MONUMENT	
<b>GLZ-1</b> - GLAZED FACADE SYSTEM - CLEAR	<b>PCP-1</b> - PRECAST CONCRETE PANEL - NATURAL FINISH	<b>MWC-3</b> - METAL WALL CLADDING - GULLY	<b>MDR-2</b> - METAL ROOF - DOVER WHITE	<b>FAS-1</b> - FOLDED ALU. FASCIA - MONUMENT	

DA ISSUE



ISSUE	DESCRIPTION	DATE
P8	ISSUE DRAWING UPDATES	01.10.25
P7	ISSUE AMENDMENTS	19.09.25
P6	DA ISSUE	08.02.24
P5	UPDATED DA SET ISSUE	26.12.24
P4	UPDATED PRELIMINARY DA SET ISSUE	17.09.24
P3	UPDATED PRELIMINARY DA SET ISSUE	28.08.24
P2	UPDATED PRELIMINARY DA SET ISSUE	15.08.24
P1	DESCRIPTION	DATE



ALDI SYD ADC

475 BADGERYS CREEK ROAD, BRADFELD

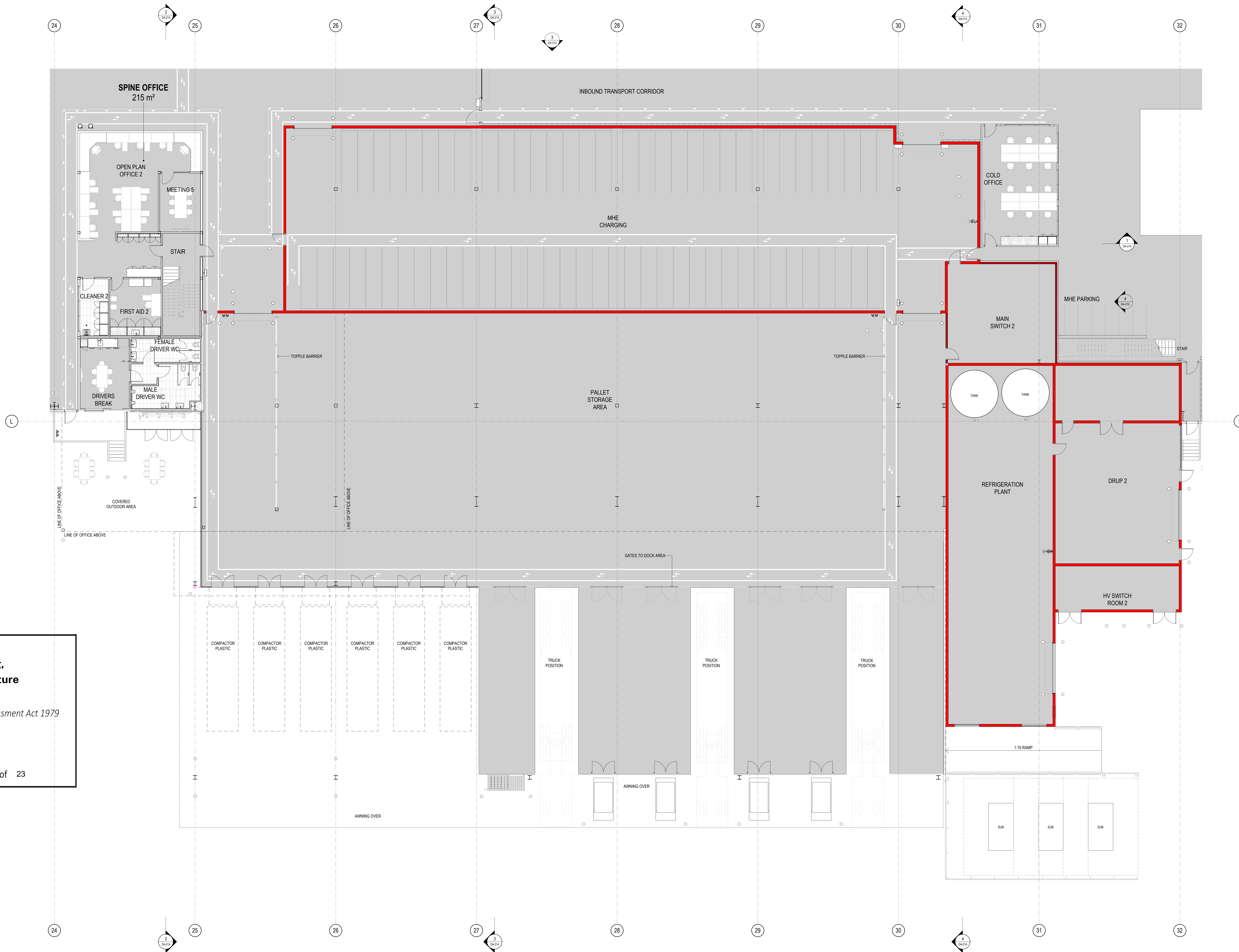



THESE DESIGN PLANS & SPECIFICATIONS AND THE COPYRIGHT THEREIN ARE THE PROPERTY OF THE ISSUING FIRM AND MUST NOT BE REPRODUCED OR COPIED IN WHOLE OR IN PART WITHOUT THE WRITTEN PERMISSION OF THE FIRM.

FIGURED DIMENSIONS TO BE USED IN PREFERENCE TO SCALING. ALL DIMENSIONS TO BE CHECKED CAREFULLY.

THIS DOCUMENT NOT TO BE USED FOR CONSTRUCTION UNLESS EXPRESSLY INDICATED OTHERWISE.

TITLE		PROJECT NO.		DWG NO.		REVISION	
MAIN OFFICE		24110		DA-200		P8	
DATE	SCALE	PROJECT NO.	DWG NO.	REVISION			
01.10.25	1:200 @ A0 1:1500 @ A3	24110	DA-200	P8			




**Department of Planning,  
Housing and Infrastructure**

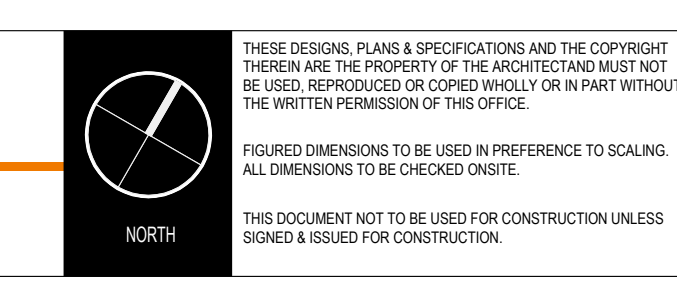
Issued under the Environmental Planning and Assessment Act 1979  
 Approved Application: **SSD-76913969**  
 Granted on: **26 February 2026**  
 Signed: **T.W** Sheet Number: **15** of **23**

#	DESCRIPTION	DATE
P9	ISSUE DRAWING UPDATES	01.10.25
P8	ISSUE AMENDMENTS	19.09.25
P7	DA ISSUE	08.02.24
P6	UPDATED DA SET ISSUE	26.12.24
P5	UPDATED PRELIMINARY DA SET ISSUE	17.09.24
P4	UPDATED PRELIMINARY DA SET ISSUE	28.08.24
P3	UPDATED PRELIMINARY DA SET ISSUE	15.08.24
P2	ISSUE	



CLIENT: **ALDI**  
 PROJECT: **ALDI SYD ADC**  
 ADDRESS: **475 BADGERYS CREEK ROAD, BRADFELD**

**ALDI SYD ADC**  
 475 BADGERYS CREEK ROAD, BRADFELD



**DA ISSUE**  
**CHARGING & SPINE BUILDING -  
GROUND FLOOR**

DATE	SCALE	PROJECT NO.	DWG NO.	REVISION
01.10.25	1:0 @ A0 1:0 @ A3	24110	DA-210	P9



Department of Planning,  
Housing and Infrastructure

Issued under the Environmental Planning and Assessment Act 1979

Approved Application: SSD-76913969

Granted on: 26 February 2026

Signed: T.W Sheet Number: 16 of 23

1 SPINE OFFICE LEVEL 1 PLAN 1:100 24



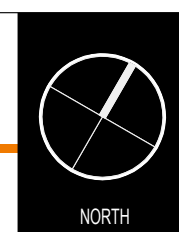
#	ISSUE AMENDMENTS	DATE
P1	DA ISSUE	06.12.24
P2	UPDATED DA SET ISSUE	28.02.24
P3	UPDATED PRELIMINARY DA SET ISSUE	17.02.24
P4	UPDATED PRELIMINARY DA SET ISSUE	28.02.24
P5	UPDATED PRELIMINARY DA SET ISSUE	11.02.24
P6	UPDATED PRELIMINARY DA SET ISSUE	07.02.24
#	DESCRIPTION	DATE

CLIENT



ALDI SYD ADC

475 BADGERYS CREEK ROAD, BRADFELD



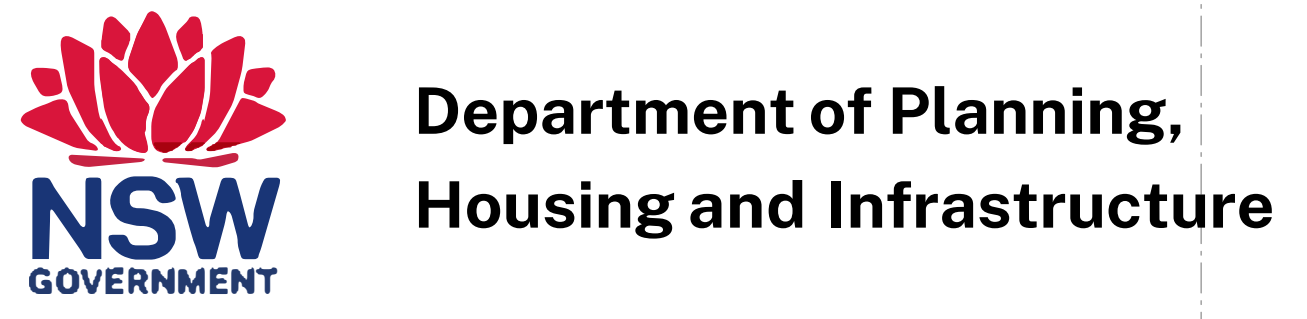
THESE DESIGN PLANS & SPECIFICATIONS AND THE COPYRIGHT THEREIN ARE THE PROPERTY OF THE ARCHITECT AND MUST NOT BE USED, REPRODUCED OR COPIED WHOLLY OR IN PART WITHOUT THE WRITTEN PERMISSION OF THE ARCHITECT.

FIGURED DIMENSIONS TO BE USED IN PREFERENCE TO SCALING. ALL DIMENSIONS TO BE CHECKED ON SITE.

THIS DOCUMENT NOT TO BE USED FOR CONSTRUCTION UNLESS SPECIFICALLY INSTRUCTED BY THE ARCHITECT.

TITLE		PROJECT NO.	DWG NO.	REVISION
CHARGING & SPINE BUILDING - FIRST FLOOR		24110	DA-211	P8
DATE	SCALE			
19.09.25	1:0 @ A0 1:0 @ A3			

DA ISSUE



Department of Planning,  
Housing and Infrastructure

Issued under the Environmental Planning and Assessment Act 1979

Approved Application: SSD-76913969

Granted on: 26 February 2026

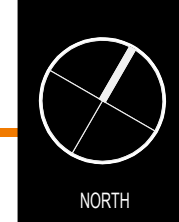
Signed: T.W Sheet Number: 17 of 23

#	ISSUE AMENDMENTS	DATE
01	ISSUE	19.09.25
02	DA ISSUE	06.12.24
03	UPDATED DA SET ISSUE	28.10.24
04	UPDATED PRELIMINARY DA SET ISSUE	17.09.24
05	UPDATED PRELIMINARY DA SET ISSUE	28.08.24
06	UPDATED PRELIMINARY DA SET ISSUE	11.08.24
07	UPDATED PRELIMINARY DA SET ISSUE	07.08.24
08	DESCRIPTION	DATE



ALDI SYD ADC

475 BADGERYS CREEK ROAD, BRADFELD



THESE DESIGN PLANS & SPECIFICATIONS AND THE COPYRIGHT THEREON ARE THE PROPERTY OF THE ARCHITECT AND MUST NOT BE REPRODUCED OR COPIED WHOLLY OR IN PART WITHOUT THE WRITTEN PERMISSION OF THE ARCHITECT.

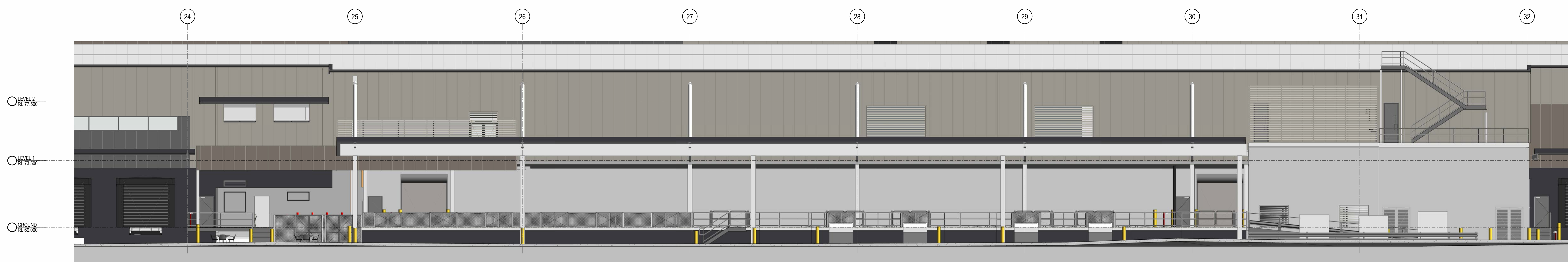
FIGURED DIMENSIONS TO BE USED IN PREFERENCE TO SCALING. ALL DIMENSIONS TO BE CHECKED ON SITE.

THIS DOCUMENT NOT TO BE USED FOR CONSTRUCTION UNLESS SPECIFICALLY SELECTED FOR CONSTRUCTION.

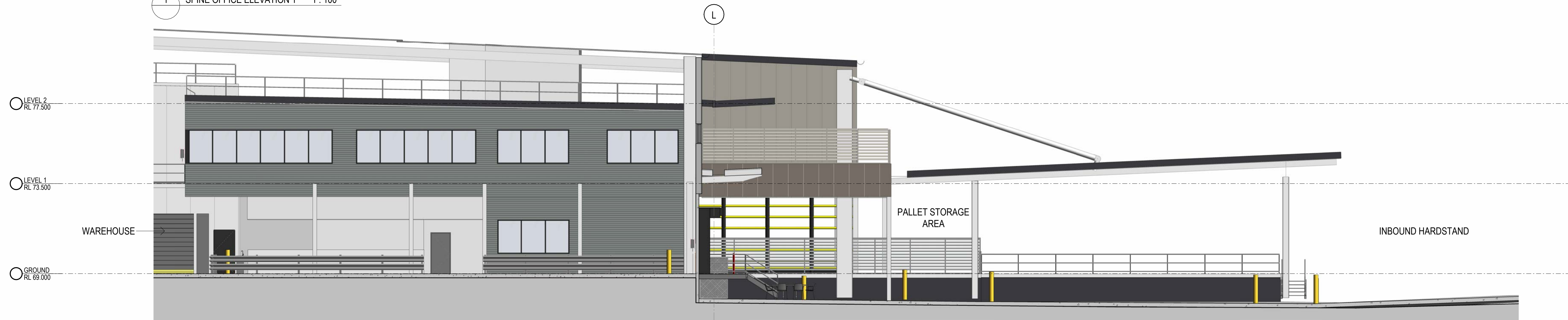
DATE	SCALE	PROJECT NO.	DWG NO.	REVISION
19.09.25	1:0 @ A0 1:0 @ A3	24110	DA-212	P8

DA ISSUE

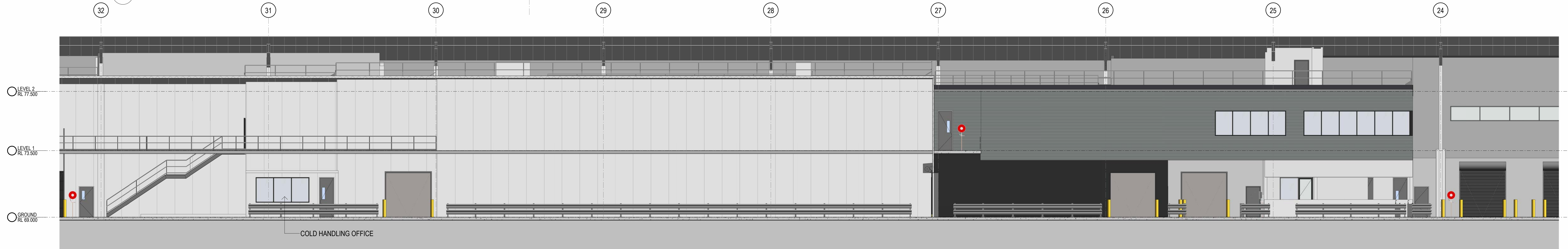
CHARGING & SPINE BUILDING - ROOF PLAN



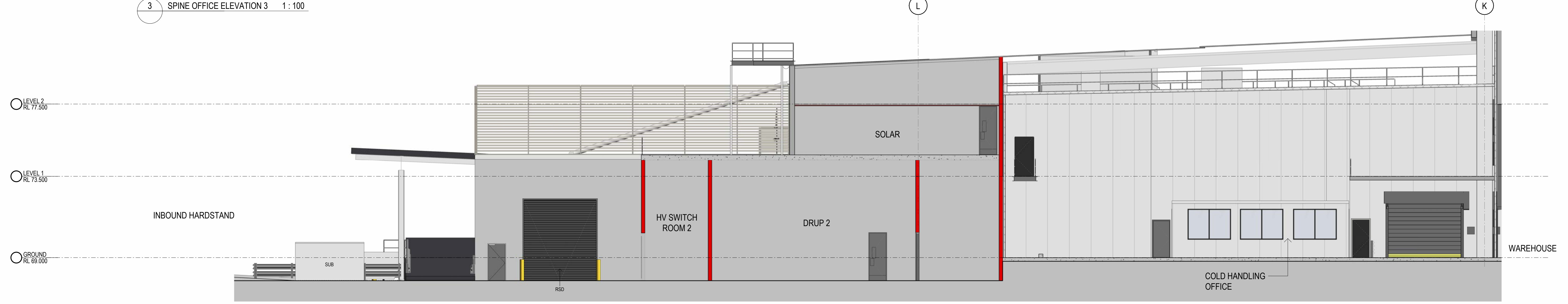
1 SPINE OFFICE ELEVATION 1 1:100



2 SPINE OFFICE ELEVATION 2 1:100



3 SPINE OFFICE ELEVATION 3 1:100



4 SPINE OFFICE ELEVATION 4 1:100

**Department of Planning,  
Housing and Infrastructure**

**NSW  
GOVERNMENT**

Issued under the Environmental Planning and Assessment Act 1979

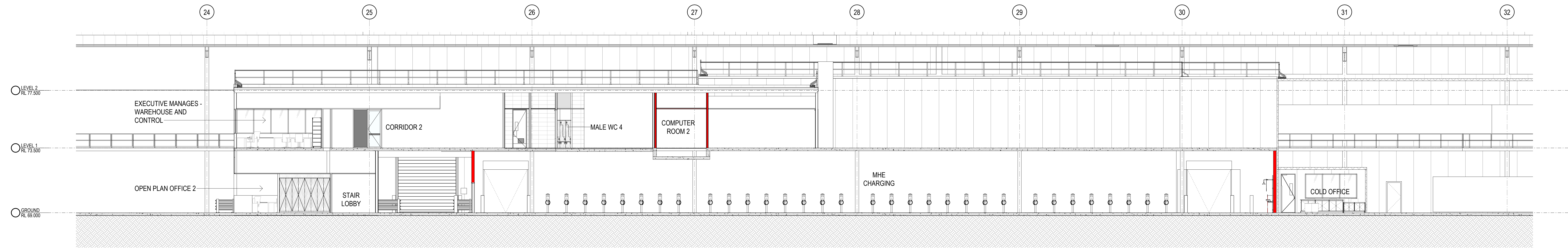
Approved Application: SSD-76913969

Granted on: 26 February 2026

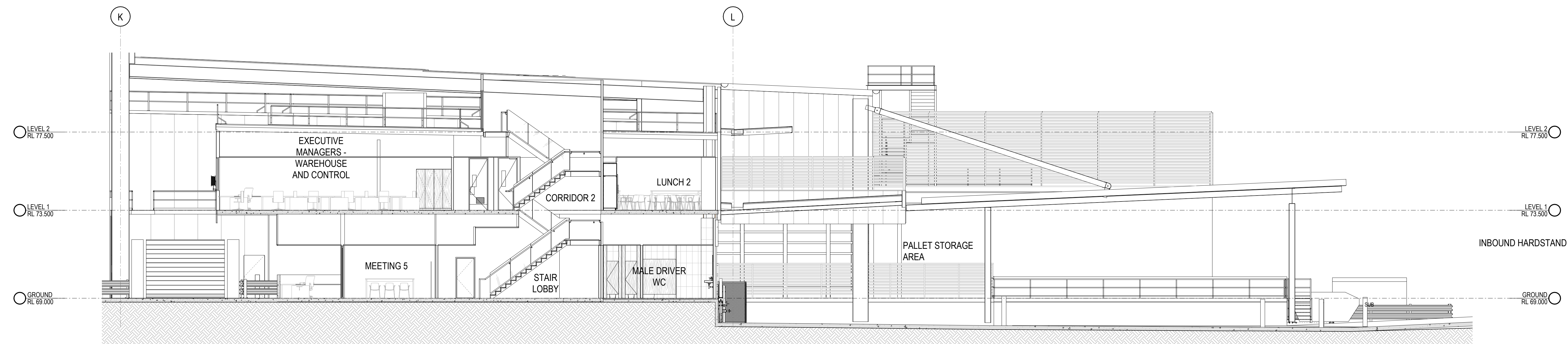
Signed: T.W Sheet Number: 18 of 23

INDICATIVE EXTERNAL FINISHES FINISHES SUBJECT TO AUTHORITY AND CLIENT APPROVAL

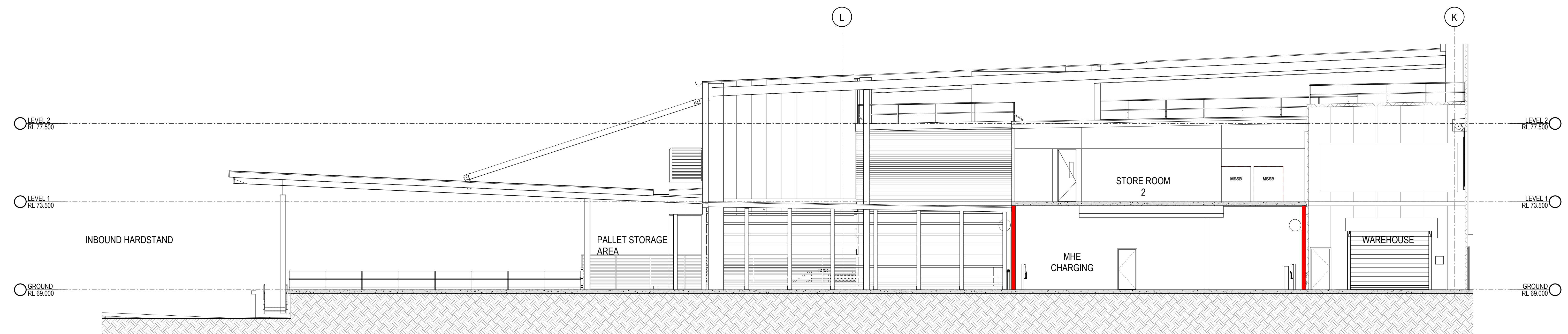
<b>BWK-1</b> - BRICK FACADE -BOWRAL 76 HEREFORD BRONZE	<b>GLZ-2</b> - GLAZED FACADE SYSTEM - GREY TINT	<b>PCP-2</b> - PRECAST CONCRETE PANEL - MONUMENT PAINT FINISH	<b>MWC-4</b> - METAL WALL CLADDING - BASALT	<b>MDR-3</b> - METAL ROOF - DOVER WHITE	<b>DP-1</b> - DOWNPIPE - MONUMENT
<b>BWK-2</b> - BRICK FACADE -BOWRAL 76 SIMMENTAL SILVER	<b>GLZ-3</b> - GLAZED FACADE SYSTEM - COLOURBACK - MONUMENT	<b>MWC-1</b> - METAL WALL CLADDING - DUNE	<b>MWC-5</b> - METAL WALL CLADDING - PAINT FINISH - ALDI ORANGE	<b>MDR-1</b> - METAL ROOF - DOVER WHITE	<b>RSD-1</b> - ROLLER SHUTTER DOOR - MONUMENT
<b>AFG-1</b> - ALU. FRAME GLAZING - MONUMENT	<b>GLZ-4</b> - GLAZED FACADE SYSTEM - FROSTED GLASS	<b>MWC-2</b> - METAL WALL CLADDING - MONUMENT	<b>MDR-2</b> - METAL ROOF - DOVER WHITE	<b>SC-1</b> - STEEL COLUMNS - PREFINISHED - MONUMENT	<b>EG-1</b> - EAVES GUTTER - MONUMENT
<b>GLZ-1</b> - GLAZED FACADE SYSTEM - CLEAR	<b>PCP-1</b> - PRECAST CONCRETE PANEL - NATURAL FINISH	<b>MWC-3</b> - METAL WALL CLADDING - GULLY	<b>MDR-4</b> - METAL ROOF - DOVER WHITE	<b>FAS-1</b> - FOLDED ALU. FASCIA - MONUMENT	



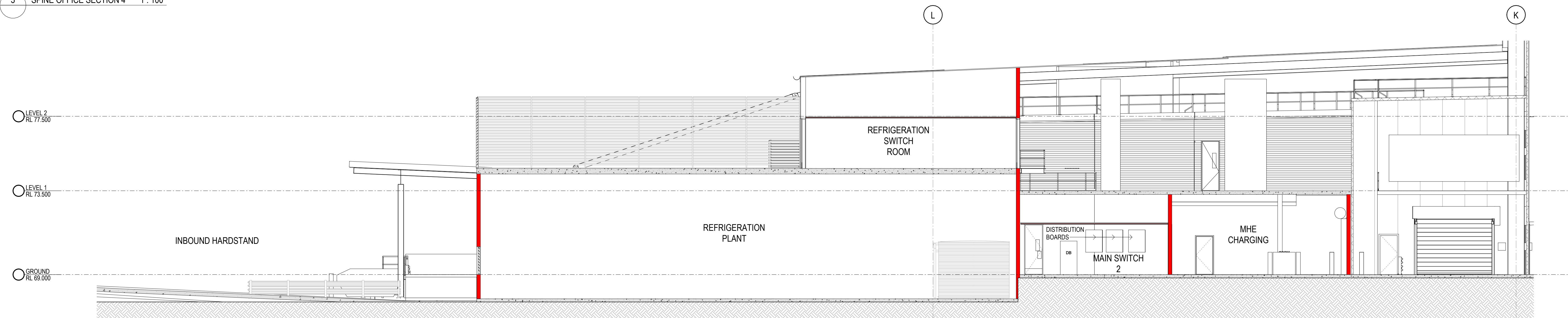
1 SPINE OFFICE SECTION 1 1:100



2 SPINE OFFICE SECTION 2 1:100



3 SPINE OFFICE SECTION 4 1:100



4 SPINE OFFICE SECTION 3 1:100

**NSW GOVERNMENT** Department of Planning, Housing and Infrastructure

Issued under the Environmental Planning and Assessment Act 1979

Approved Application: SSD-76913969

Granted on: 26 February 2026

Signed: T.W Sheet Number: 19 of 23