
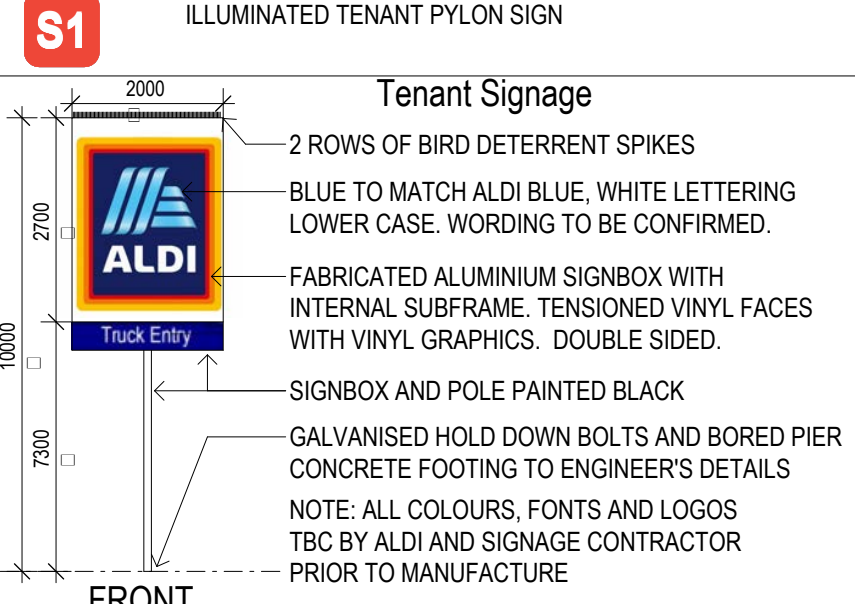
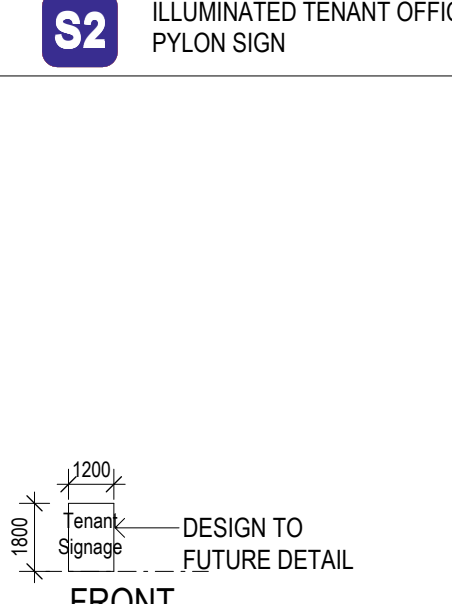
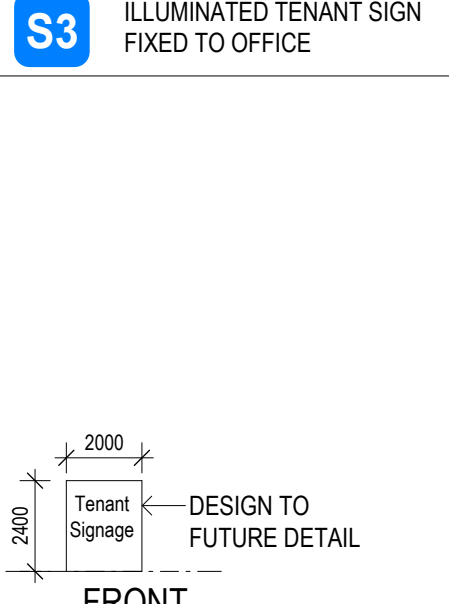
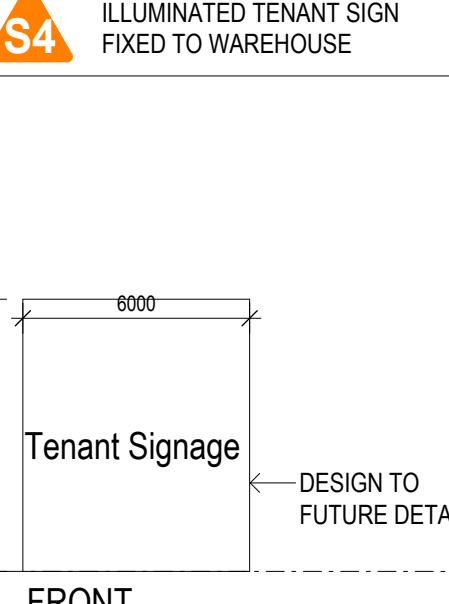
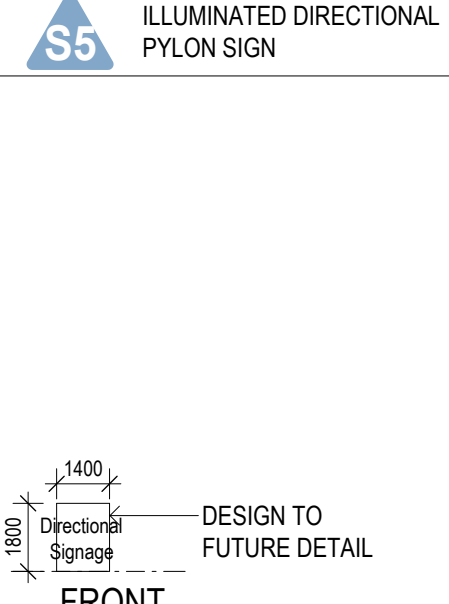
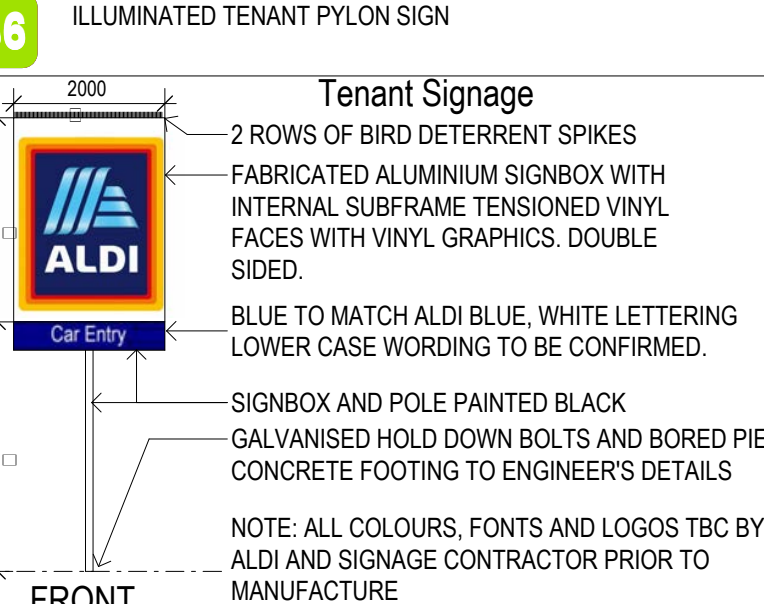




1 SIGNAGE PLAN 1:600


**Department of Planning,
Housing and Infrastructure**
 Issued under the Environmental Planning and Assessment Act 1979
 Approved Application: SSD-76913969
 Granted on: 26 February 2026
 Signed: T.W Sheet Number: 8 of 23


S1	S2	S3	A4	S5	S6
<p>S1 ILLUMINATED TENANT PYLON SIGN</p>  <p>Tenant Signage</p> <ul style="list-style-type: none"> 2 ROWS OF BIRD DETERRENT SPIKES BLUE TO MATCH ALDI BLUE, WHITE LETTERING LOWER CASE, WORDING TO BE CONFIRMED FABRICATED ALUMINIUM SIGNBOX WITH INTERNAL SUBFRAME, TENSIONED VINYL FACES WITH VINYL GRAPHICS, DOUBLE SIDED SIGNBOX AND POLE PAINTED BLACK GALVANISED HOLD DOWN BOLTS AND BORED PIER CONCRETE FOOTING TO ENGINEER'S DETAILS NOTE: ALL COLOURS, FONTS AND LOGOS TBC BY ALDI AND SIGNAGE CONTRACTOR PRIOR TO MANUFACTURE <p>FRONT</p>	<p>S2 ILLUMINATED TENANT OFFICE PYLON SIGN</p>  <p>FRONT</p>	<p>S3 ILLUMINATED TENANT SIGN FIXED TO OFFICE</p>  <p>FRONT</p>	<p>A4 ILLUMINATED TENANT SIGN FIXED TO WAREHOUSE</p>  <p>FRONT</p>	<p>S5 ILLUMINATED DIRECTIONAL PYLON SIGN</p>  <p>FRONT</p>	<p>S6 ILLUMINATED TENANT PYLON SIGN</p>  <p>Tenant Signage</p> <ul style="list-style-type: none"> 2 ROWS OF BIRD DETERRENT SPIKES FABRICATED ALUMINIUM SIGNBOX WITH INTERNAL SUBFRAME TENSIONED VINYL FACES WITH VINYL GRAPHICS, DOUBLE SIDED BLUE TO MATCH ALDI BLUE, WHITE LETTERING LOWER CASE WORDING TO BE CONFIRMED SIGNBOX AND POLE PAINTED BLACK GALVANISED HOLD DOWN BOLTS AND BORED PIER CONCRETE FOOTING TO ENGINEER'S DETAILS NOTE: ALL COLOURS, FONTS AND LOGOS TBC BY ALDI AND SIGNAGE CONTRACTOR PRIOR TO MANUFACTURE <p>FRONT</p>

DA ISSUE

	<table border="1"> <tr><td>PS</td><td>ISSUE DRAWING UPDATES</td><td>01.10.25</td></tr> <tr><td>PS</td><td>SIGNAGE UPDATE</td><td>25.09.25</td></tr> <tr><td>PS</td><td>ISSUE AMENDMENTS</td><td>16.09.25</td></tr> <tr><td>PS</td><td>DA ISSUE</td><td>06.12.24</td></tr> <tr><td>PS</td><td>UPDATED DA SET ISSUE</td><td>28.10.24</td></tr> <tr><td>PS</td><td>UPDATED PRELIMINARY DA SET ISSUE</td><td>17.09.24</td></tr> <tr><td>PS</td><td>UPDATED PRELIMINARY DA SET ISSUE</td><td>15.08.24</td></tr> <tr><td>#</td><td>DESCRIPTION</td><td>DATE</td></tr> </table>	PS	ISSUE DRAWING UPDATES	01.10.25	PS	SIGNAGE UPDATE	25.09.25	PS	ISSUE AMENDMENTS	16.09.25	PS	DA ISSUE	06.12.24	PS	UPDATED DA SET ISSUE	28.10.24	PS	UPDATED PRELIMINARY DA SET ISSUE	17.09.24	PS	UPDATED PRELIMINARY DA SET ISSUE	15.08.24	#	DESCRIPTION	DATE	
PS	ISSUE DRAWING UPDATES	01.10.25																								
PS	SIGNAGE UPDATE	25.09.25																								
PS	ISSUE AMENDMENTS	16.09.25																								
PS	DA ISSUE	06.12.24																								
PS	UPDATED DA SET ISSUE	28.10.24																								
PS	UPDATED PRELIMINARY DA SET ISSUE	17.09.24																								
PS	UPDATED PRELIMINARY DA SET ISSUE	15.08.24																								
#	DESCRIPTION	DATE																								

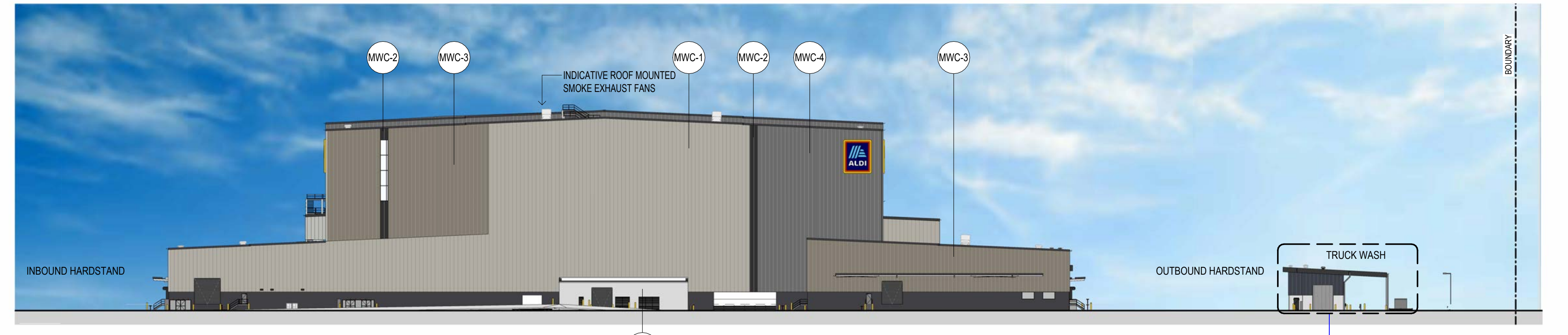
ALDI SYD ADC

475 BADGERYS CREEK ROAD, BRADFIELD

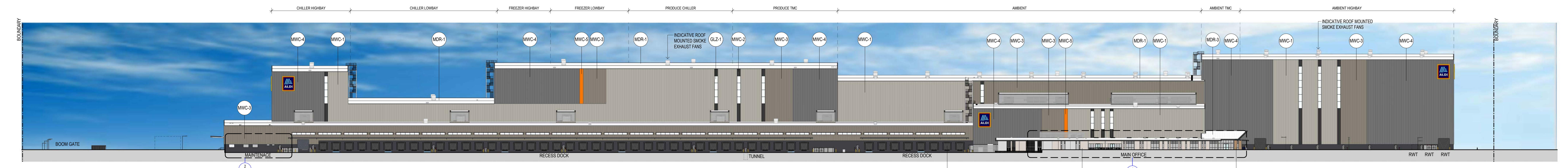
	<p>SIGNAGE PLAN</p> <p>DATE: 01.10.25 SCALE: 1:600 @ A0 1:4800 @ A3</p>	<p>PROJECT NO: 24110 DWG NO: DA-130 REVISION: P9</p>
---	--	--



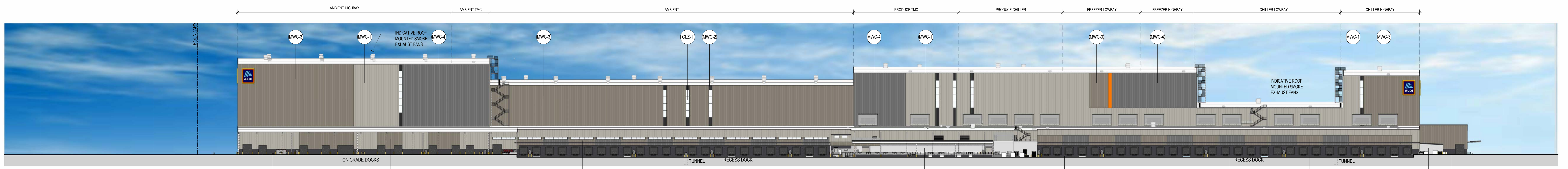
1 WEST ELEVATION - WAREHOUSE 1:600



3 EAST ELEVATION - WAREHOUSE 1:600




2 NORTH ELEVATION - WAREHOUSE 1:600



4 SOUTH ELEVATION - WAREHOUSE 1:600

INDICATIVE EXTERNAL FINISHES FINISHES SUBJECT TO AUTHORITY AND CLIENT APPROVAL

B/WK-1 - BRICK FACADE - BOWRAL 76 HEREFORD BRONZE	GLZ-2 - GLAZED FACADE SYSTEM - GREY TINT	PCP-2 - PRECAST CONCRETE PANEL - MONUMENT PAINT FINISH	MWC-4 - METAL WALL CLADDING - BASALT	MDR-3 - METAL ROOF - DOVER WHITE	DP-1 - DOWNPIPE - MONUMENT
B/WK-2 - BRICK FACADE - BOWRAL 76 SIMMENTAL SILVER	GLZ-3 - GLAZED FACADE SYSTEM - COLOURBACK - MONUMENT	MWC-1 - METAL WALL CLADDING - DUNE	MWC-5 - METAL WALL CLADDING - PAINT FINISH - ALDI ORANGE	MDR-1 - METAL ROOF - DOVER WHITE	EG-1 - EAVES GUTTER - MONUMENT
AFG-1 - ALU. FRAME GLAZING - MONUMENT	GLZ-4 - GLAZED FACADE SYSTEM - FROSTED GLASS	MWC-2 - METAL WALL CLADDING - MONUMENT	MDR-2 - METAL ROOF - DOVER WHITE	RSD-1 - ROLLER SHUTTER DOOR - MONUMENT	SC-1 - STEEL COLUMNS - PREFINISHED - MONUMENT
GLZ-1 - GLAZED FACADE SYSTEM - CLEAR	PCP-1 - PRECAST CONCRETE PANEL - NATURAL FINISH	MWC-3 - METAL WALL CLADDING - GULLY	MDR-2 - METAL ROOF - DOVER WHITE	FAS-1 - FOLDED ALU. FASCIA - MONUMENT	



**Department of Planning,
Housing and Infrastructure**

Issued under the Environmental Planning and Assessment Act 1979

Approved Application: SSD-76913969

Granted on: 26 February 2026

Signed: T.W Sheet Number: 9 of 23

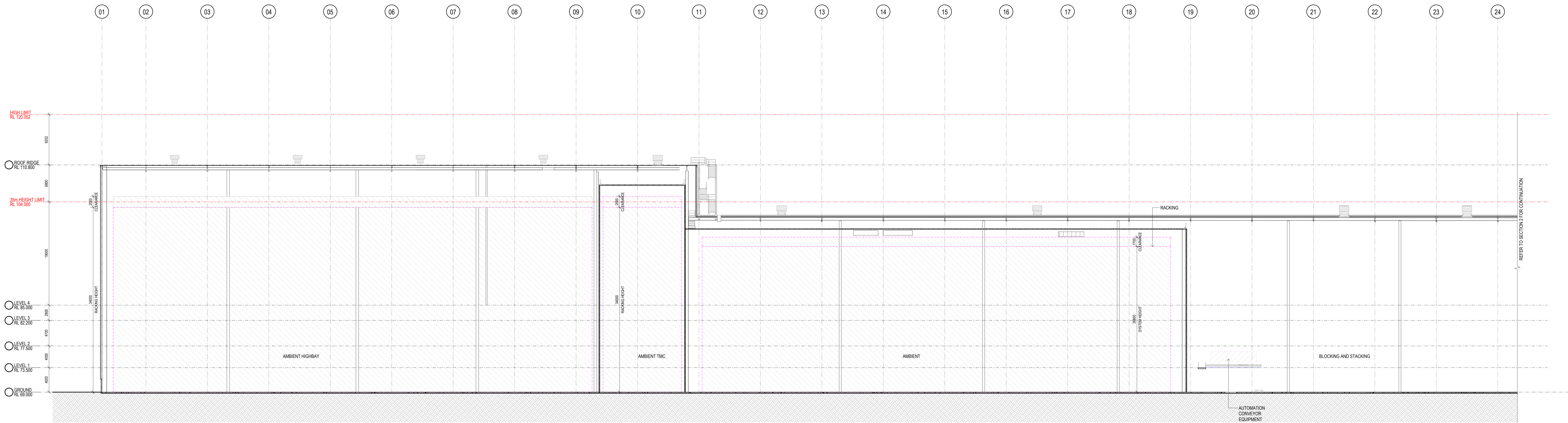
P11	ISSA DRAWING UPDATES	01.10.25
P10	ISSA UPDATE	25.09.25
P9	ISSA AMENDMENTS	18.09.25
P8	DA ISSUE	06.12.24
P7	UPDATED ELEVATIONS AND FINISHES	25.11.24
P6	INTERPROCESS ELEVATION ISSUE	08.11.24
P5	UPDATED PRELIMINARY DA SET ISSUE	17.08.24
#	DESCRIPTION	DATE



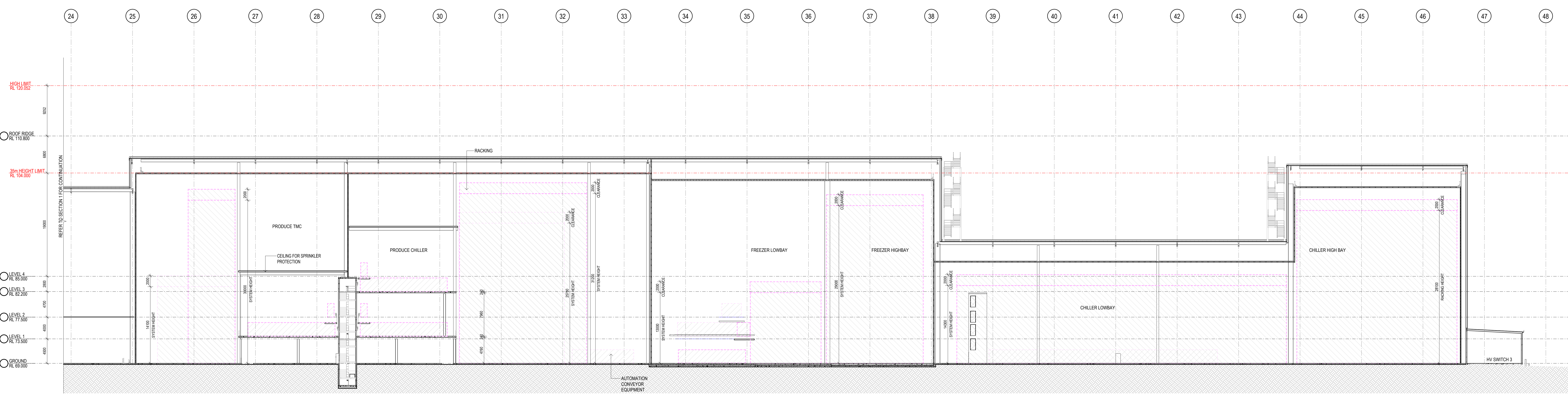
ALDI SYD ADC
475 BADGERYS CREEK ROAD, BRADFELD

THESE DESIGN PLANS & SPECIFICATIONS AND THE COPYRIGHT THEREON ARE THE PROPERTY OF THE APPLICANT AND MUST NOT BE REPRODUCED OR COPIED WHOLLY OR IN PART WITHOUT THE WRITTEN PERMISSION OF THE APPLICANT.			
FIGURED DIMENSIONS TO BE USED IN PREFERENCE TO SCALES. ALL DIMENSIONS TO BE CHECKED CAREFULLY.			
THIS DOCUMENT NOT TO BE USED FOR CONSTRUCTION UNLESS EXPRESSLY INDICATED OTHERWISE.			
DATE	SCALE	PROJECT NO.	DWG NO.
01.10.25	1:600 @ A0 1:4800 @ A3	24110	DA-140
REVISION			
			P11


DA ISSUE



1 WAREHOUSE SECTION - WEST 1:250



2 WAREHOUSE SECTION - EAST 1:250


**Department of Planning,
Housing and Infrastructure**

Issued under the Environmental Planning and Assessment Act 1979
 Approved Application: SSD-76913969
 Granted on: 26 February 2026
 Signed: T.W Sheet Number: 10 of 23

LEGEND:

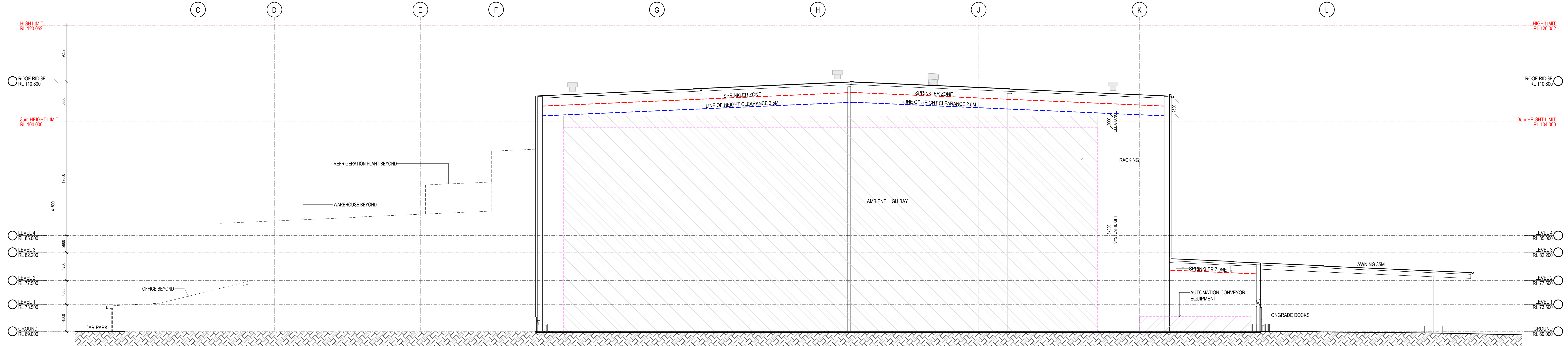
	AUTOMATION CONVEYOR EQUIPMENT TO FUTURE DETAIL
	AUTOMATION RACKING TO FUTURE DETAIL

DA ISSUE

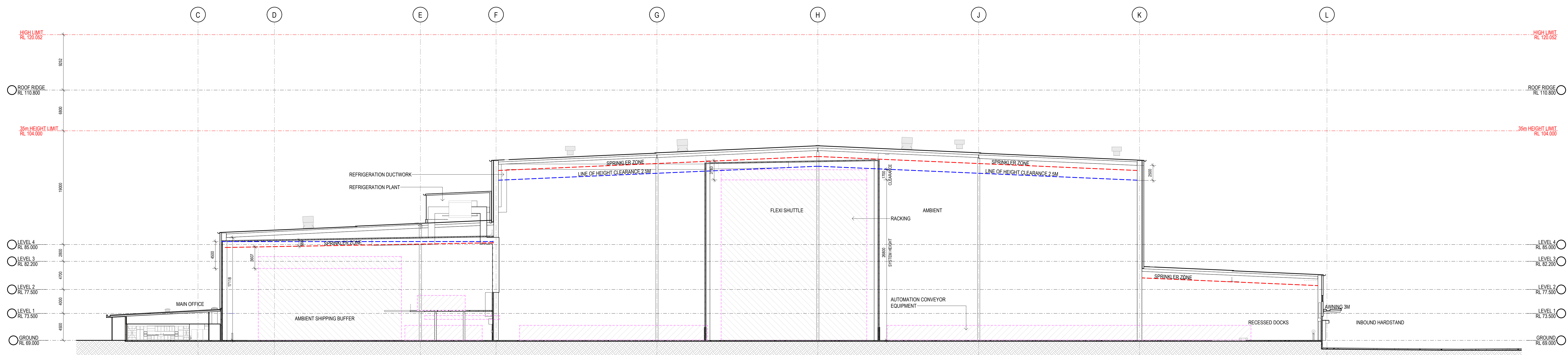
	P9 DESIGN AMENDMENTS 19.09.25 P8 DA ISSUE 06.12.24 P7 UPDATED DA SET ISSUE 28.03.24 P6 UPDATED PRELIMINARY DA SET ISSUE 17.02.24 P5 UPDATED PRELIMINARY DA SET ISSUE 28.08.24 P4 UPDATED PRELIMINARY DA SET ISSUE 11.03.24 P3 UPDATED PRELIMINARY DA SET ISSUE 07.08.24 P2 DESCRIPTION DATE	
--	--	--

ALDI SYD ADC
 475 BADGERYS CREEK ROAD, BRADFIELD

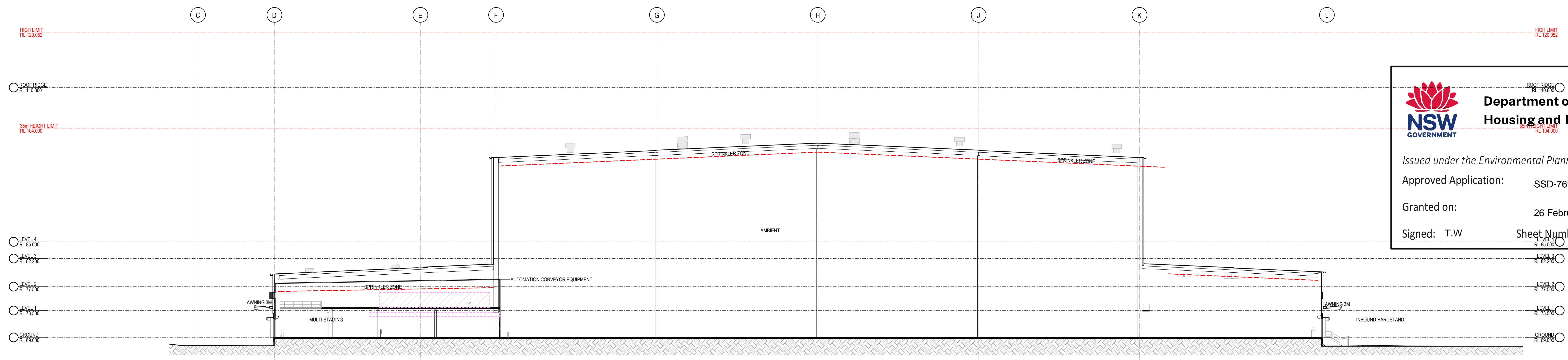
<small>THESE DESIGN PLANS & SPECIFICATIONS AND THE COPYRIGHT THEREIN ARE THE PROPERTY OF THE APPLICANT AND MUST NOT BE REPRODUCED OR COPIED WHOLLY OR IN PART WITHOUT THE WRITTEN PERMISSION OF THE APPLICANT.</small>		<small>FOR ALL DIMENSIONS TO BE CHECKED ON SITE.</small>	<small>THIS DOCUMENT NOT TO BE USED FOR CONSTRUCTION UNLESS SPECIFICALLY REFERRED TO IN CONTRACT DOCUMENTS.</small>
TITLE BUILDING SECTION SHEET 1	DATE 19.09.25	SCALE 1:250 @ A0 1:2000 @ A3	PROJECT NO. 24110
DWG NO. DA-150	REVISION P9		




1 WAREHOUSE AMBIENT ZONE - SECTION 1 1:250



2 WAREHOUSE AMBIENT ZONE - SECTION 2 1:250



3 WAREHOUSE AMBIENT ZONE - SECTION 3 1:250


**Department of Planning,
Housing and Infrastructure**

Issued under the Environmental Planning and Assessment Act 1979
 Approved Application: **SSD-76913969**
 Granted on: **26 February 2026**
 Signed: **T.W**

Sheet Number: **11** of **23**

LEGEND:

	AUTOMATION CONVEYOR EQUIPMENT TO FUTURE DETAIL
	AUTOMATION RACKING TO FUTURE DETAIL



#	DESCRIPTION	DATE
P9	ISSUE AMENDMENTS	19.09.25
P8	DA ISSUE	06.12.24
P7	UPDATED DA SET ISSUE	28.10.24
P6	UPDATED PRELIMINARY DA SET ISSUE	17.09.24
P5	UPDATED PRELIMINARY DA SET ISSUE	20.08.24
P4	UPDATED PRELIMINARY DA SET ISSUE	11.08.24
P3	UPDATED PRELIMINARY DA SET ISSUE	07.08.24

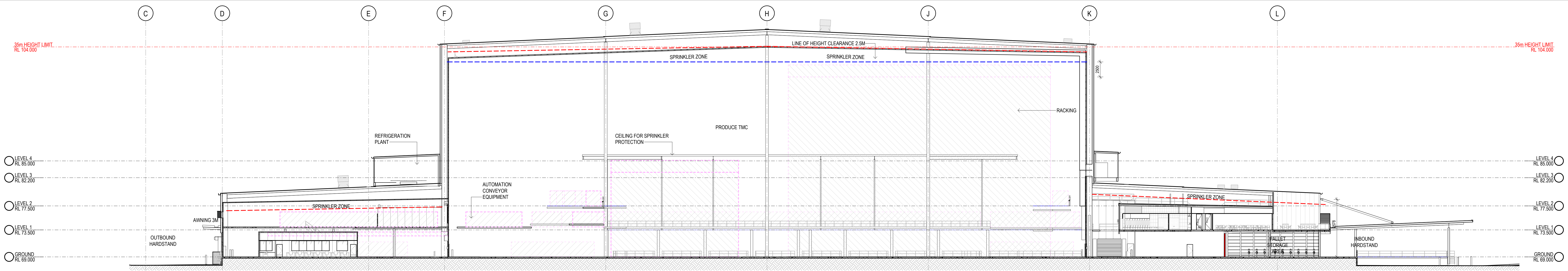


ALDI SYD ADC
475 BADGERYS CREEK ROAD, BRADFIELD

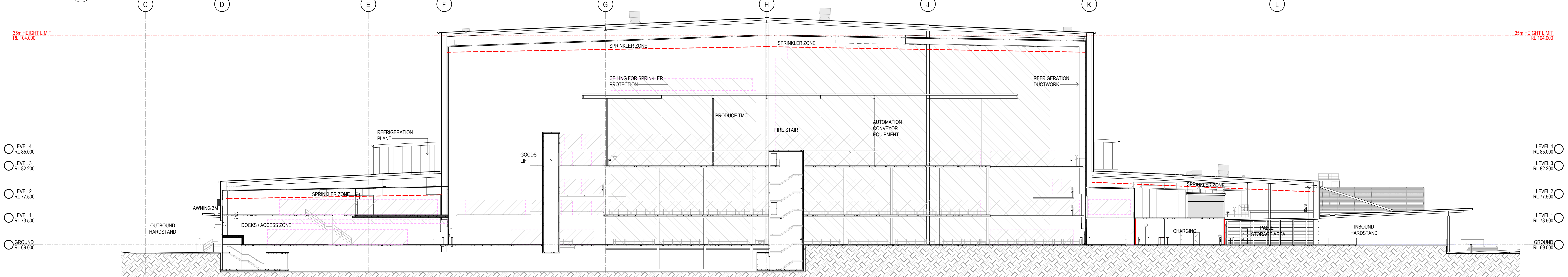
DATE	SCALE	PROJECT NO.	DWG NO.	REVISION
19.09.25	1:250 @ A0 1:2000 @ A3	24110	DA-151	P9

TITLE
BUILDING SECTION SHEET 2

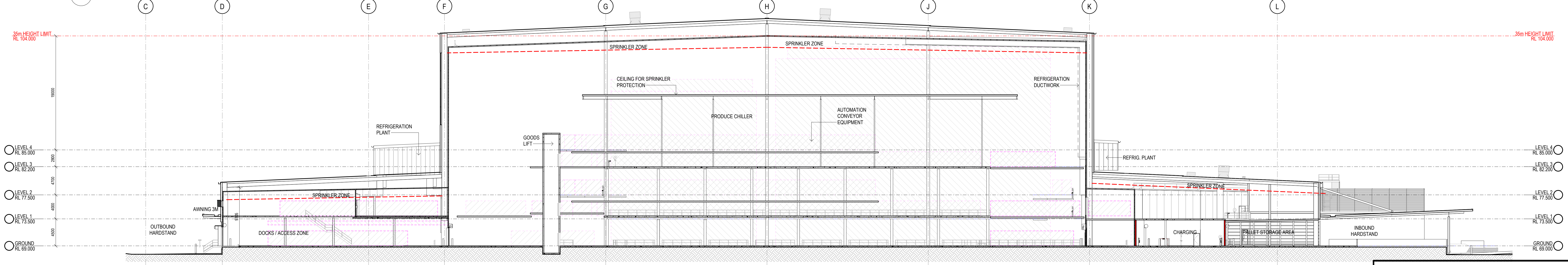
DA ISSUE



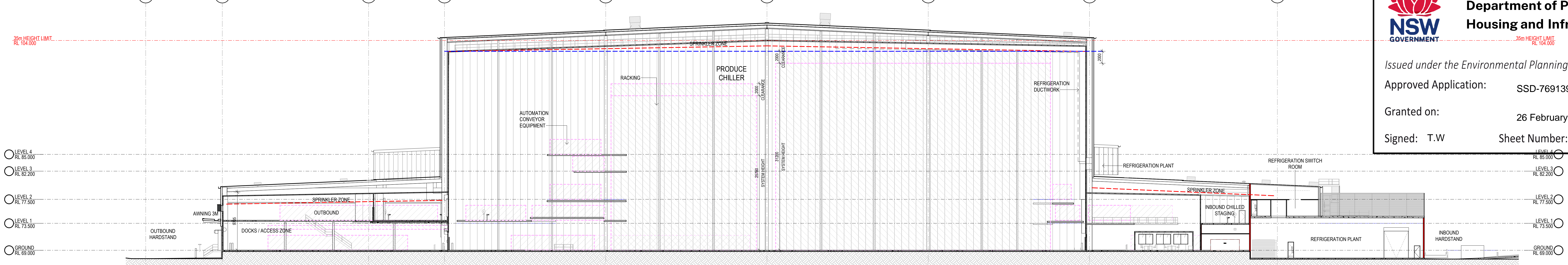
1 WAREHOUSE PRODUCE ZONE - SECTION 1 1: 250



2 WAREHOUSE PRODUCE ZONE - SECTION 2 1: 250



3 WAREHOUSE PRODUCE ZONE - SECTION 3 1: 250



4 WAREHOUSE PRODUCE ZONE - SECTION 4 1: 250

**Department of Planning,
Housing and Infrastructure**

**NSW
GOVERNMENT**

Issued under the Environmental Planning and Assessment Act 1979

Approved Application: **SSD-76913969**

Granted on: **26 February 2026**

Signed: **T.W** Sheet Number: **12** of **23**

LEGEND:

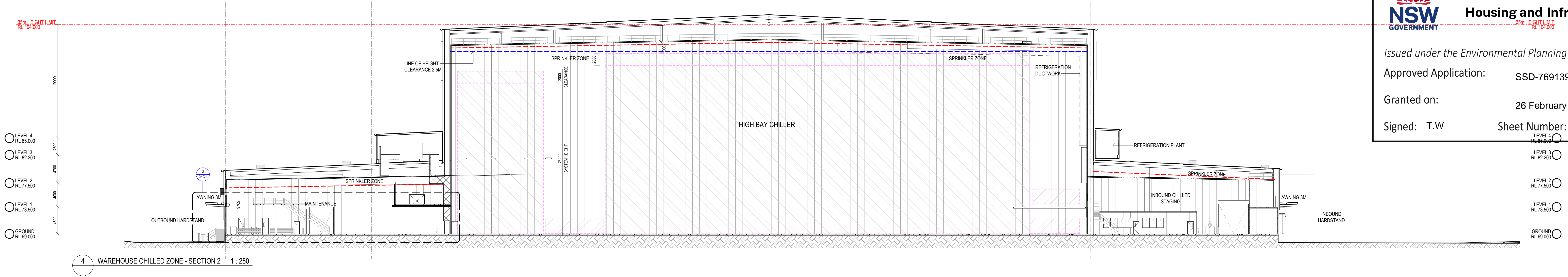
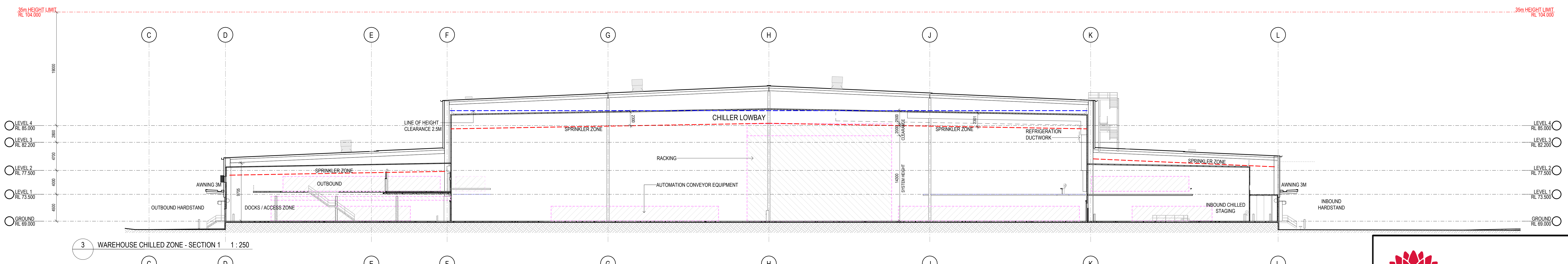
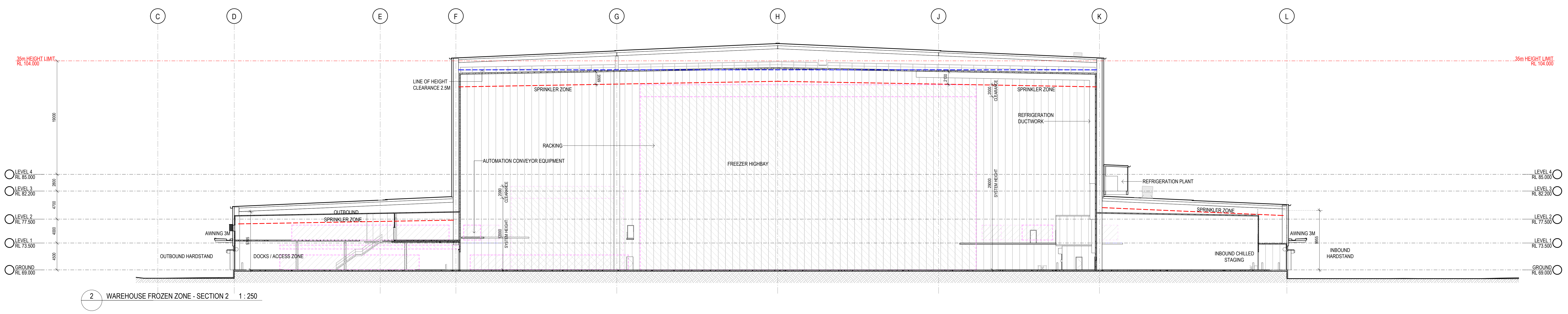
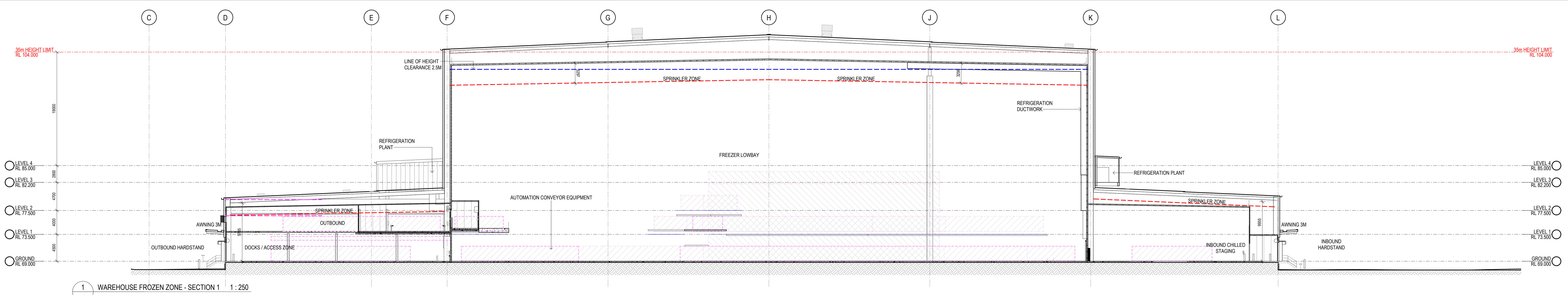
	AUTOMATION CONVEYOR EQUIPMENT TO FUTURE DETAIL
	AUTOMATION RACKING TO FUTURE DETAIL

DA ISSUE

sba	ISSUE AMENDMENTS	19.09.25	CLIENT	
	P0 DA ISSUE	06.12.24		
	P1 UPDATED DA SET ISSUE	28.10.24		
	P2 UPDATED PRELIMINARY DA SET ISSUE	17.09.24		
	P3 UPDATED PRELIMINARY DA SET ISSUE	28.08.24		
	P4 UPDATED PRELIMINARY DA SET ISSUE	11.08.24		
	P5 UPDATED PRELIMINARY DA SET ISSUE	07.08.24		
	# DESCRIPTION	DATE		

ALDI SYD ADC
475 BADGERYS CREEK ROAD, BRADFELD

THESE DESIGN PLANS & SPECIFICATIONS AND THE COPYRIGHT THEREIN ARE THE PROPERTY OF THE ISSUING FIRM AND MUST NOT BE REPRODUCED OR COPIED IN WHOLE OR IN PART WITHOUT THE WRITTEN PERMISSION OF THE FIRM.		TITLE	
REQUIRED DIMENSIONS TO BE USED IN REFERENCE TO SCALING. ALL DIMENSIONS TO BE CHECKED CAREFULLY.		BUILDING SECTION SHEET 3	
THIS DOCUMENT NOT TO BE USED FOR CONSTRUCTION UNLESS SPECIFICALLY SO INDICATED.		DATE	SCALE
		19.09.25	1:250 @ A0 1:2000 @ A3
		PROJECT NO.	DWG NO.
		24110	DA-152 P9
		REVISION	



**Department of Planning,
Housing and Infrastructure**

**NSW
GOVERNMENT**

Issued under the Environmental Planning and Assessment Act 1979

Approved Application: **SSD-76913969**

Granted on: **26 February 2026**

Signed: **T.W** Sheet Number: **13** of **23**

LEGEND:

	AUTOMATION CONVEYOR EQUIPMENT TO FUTURE DETAIL
	AUTOMATION RACKING TO FUTURE DETAIL

DA ISSUE

sba	ISSUE AMENDMENTS	19.09.25	CLIENT	ALDI
	P0 DA ISSUE	06.12.24		
	P1 UPDATED DA SET ISSUE	28.02.24		
	P2 UPDATED PRELIMINARY DA SET ISSUE	17.02.24		
	P3 UPDATED PRELIMINARY DA SET ISSUE	28.02.24		
	P4 UPDATED PRELIMINARY DA SET ISSUE	11.02.24		
	P5 UPDATED PRELIMINARY DA SET ISSUE	07.02.24		
	# DESCRIPTION	DATE		

ALDI SYD ADC
475 BADGERYS CREEK ROAD, BRADFIELD

THESE ORIGINAL PLANS & SPECIFICATIONS AND THE COPYRIGHT THEREON ARE THE PROPERTY OF THE ISSUING ENGINEER AND MUST BE USED, REPRODUCED OR COPIED WHOLLY OR IN PART WITHOUT THE WRITTEN PERMISSION OF THE ISSUING ENGINEER.			
FOR ALL DIMENSIONS TO BE USED IN REFERENCE TO SCALING, ALL DIMENSIONS TO BE CHECKED CAREFULLY.			
THIS DOCUMENT NOT TO BE USED FOR CONSTRUCTION UNLESS SPECIFICALLY AUTHORISED BY THE ISSUING ENGINEER.			
DATE	SCALE	PROJECT NO.	DWG NO.
19.09.25	1:250 @ A0 1:2000 @ A3	24110	DA-153 P9
TITLE		REVISION	
BUILDING SECTION SHEET 4			